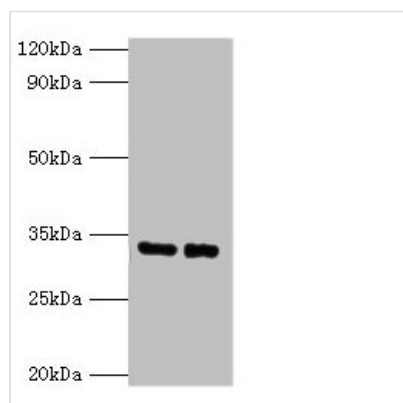




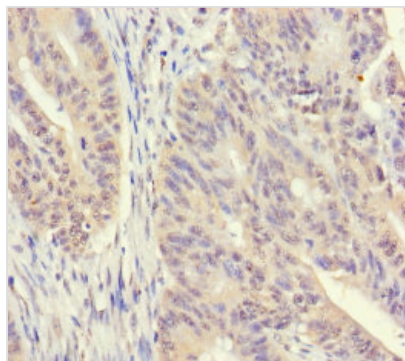
SRM Antibody

Product Code	CSB-PA01115A0Rb
Storage	Upon receipt, store at -20°C or -80°C. Avoid repeated freeze.
Uniprot No.	P19623
Immunogen	Recombinant Human Spermidine synthase protein (17-302AA)
Raised In	Rabbit
Species Reactivity	Human
Tested Applications	ELISA, WB, IHC; Recommended dilution: WB:1:1000-1:5000, IHC:1:20-1:200
Form	Liquid
Conjugate	Non-conjugated
Storage Buffer	Preservative: 0.03% Proclin 300 Constituents: 50% Glycerol, 0.01M PBS, PH 7.4
Purification Method	>95%, Protein G purified
Isotype	IgG
Clonality	Polyclonal
Alias	Spermidine synthase (SPDSY) (EC 2.5.1.16) (Putrescine aminopropyltransferase), SRM, SPS1 SRML1
Immunogen Species	Homo sapiens (Human)
Research Area	Signal Transduction
Target Names	SRM

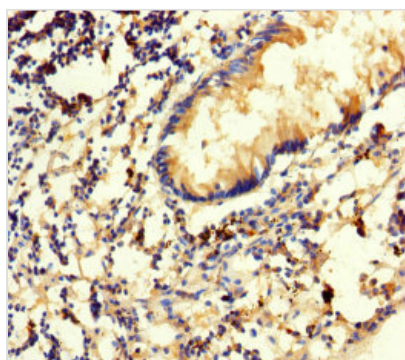
Image



Western blot
 All lanes: SRM antibody at 2µg/ml
 Lane 1: EC109 whole cell lysate
 Lane 2: 293T whole cell lysate
 Secondary
 Goat polyclonal to rabbit IgG at 1/15000 dilution
 Predicted band size: 34 kDa
 Observed band size: 34 kDa



Immunohistochemistry of paraffin-embedded human colon cancer using CSB-PA01115A0Rb at dilution of 1:100



Immunohistochemistry of paraffin-embedded human appendix tissue using CSB-PA01115A0Rb at dilution of 1:100

Usage

For Research Use Only. Not for use in diagnostic or therapeutic procedures.