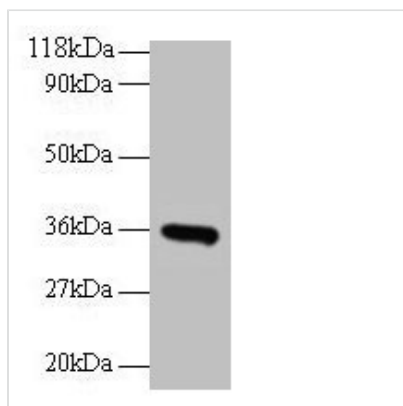




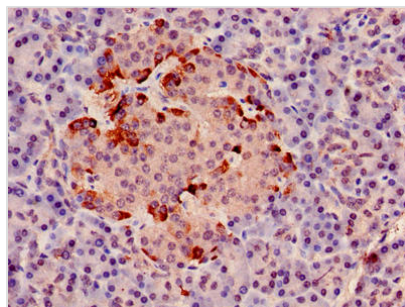
CYC1 Antibody

Product Code	CSB-PA01515A0Rb
Storage	Upon receipt, store at -20°C or -80°C. Avoid repeated freeze.
Uniprot No.	P08574
Immunogen	Recombinant Human Cytochrome c1, heme protein, mitochondrial protein (85-325AA)
Raised In	Rabbit
Species Reactivity	Human
Tested Applications	ELISA, WB, IHC, IF; Recommended dilution: WB:1:500-1:5000, IHC:1:20-1:200, IF:1:50-1:200
Form	Liquid
Conjugate	Non-conjugated
Storage Buffer	Preservative: 0.03% Proclin 300 Constituents: 50% Glycerol, 0.01M PBS, PH 7.4
Purification Method	>95%, Protein G purified
Isotype	IgG
Clonality	Polyclonal
Alias	Cytochrome c1, heme protein, mitochondrial (Complex III subunit 4) (Complex III subunit IV) (Cytochrome b-c1 complex subunit 4) (Ubiquinol-cytochrome-c reductase complex cytochrome c1 subunit) (Cytochrome c-1), CYC1
Immunogen Species	Homo sapiens (Human)
Research Area	Tags & Cell Markers
Target Names	CYC1

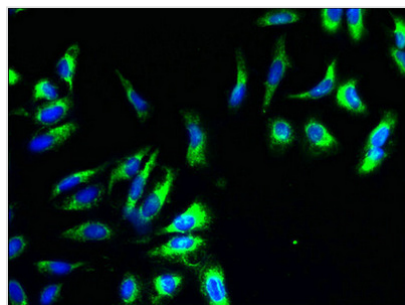
Image



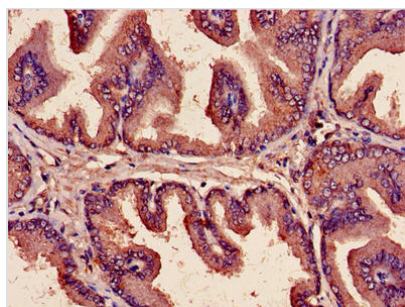
Western blot
 All lanes: CYC1 antibody at 2µg/ml + EC109 whole cell lysate
 Secondary
 Goat polyclonal to rabbit IgG at 1/15000 dilution
 Predicted band size: 36 kDa
 Observed band size: 36 kDa



Immunohistochemistry of paraffin-embedded human pancreatic tissue using CSB-PA01515A0Rb at dilution of 1:100



Immunofluorescent analysis of HeLa cells using CSB-PA01515A0Rb at dilution of 1:100 and Alexa Fluor 488-conjugated AffiniPure Goat Anti-Rabbit IgG(H+L)



Immunohistochemistry of paraffin-embedded human prostate cancer using CSB-PA01515A0Rb at dilution of 1:100

Usage

For Research Use Only. Not for use in diagnostic or therapeutic procedures.