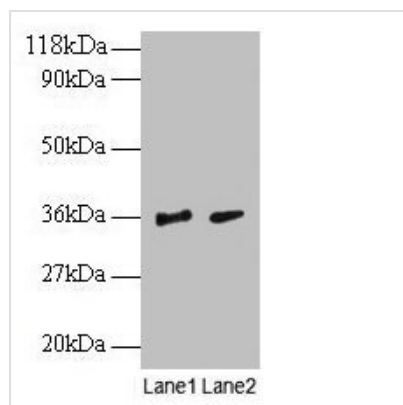




# SNRPG Antibody

<b>Product Code</b>	CSB-PA01535A0Rb
<b>Storage</b>	Upon receipt, store at -20°C or -80°C. Avoid repeated freeze.
<b>Uniprot No.</b>	P62308
<b>Immunogen</b>	Recombinant Human Small nuclear ribonucleoprotein G protein (1-76AA)
<b>Raised In</b>	Rabbit
<b>Species Reactivity</b>	Human
<b>Tested Applications</b>	ELISA, WB, IHC, IF; Recommended dilution: WB:1:500-1:2000, IHC:1:20-1:200, IF:1:50-1:200
<b>Form</b>	Liquid
<b>Conjugate</b>	Non-conjugated
<b>Storage Buffer</b>	Preservative: 0.03% Proclin 300 Constituents: 50% Glycerol, 0.01M PBS, PH 7.4
<b>Purification Method</b>	>95%, Protein G purified
<b>Isotype</b>	IgG
<b>Clonality</b>	Polyclonal
<b>Alias</b>	Small nuclear ribonucleoprotein G (snRNP-G) (Sm protein G) (Sm-G) (SmG), SNRPG, PBSCG
<b>Immunogen Species</b>	Homo sapiens (Human)
<b>Research Area</b>	Others
<b>Target Names</b>	SNRPG

## Image



Western blot

All lanes: SNRPG antibody at 2µg/ml

Lane 1: EC109 whole cell lysate

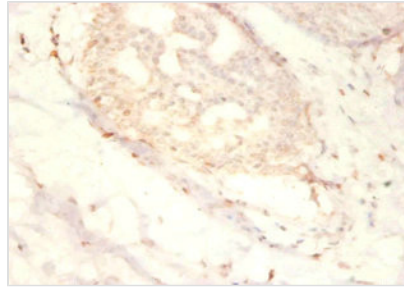
Lane 2: 293T whole cell lysate

Secondary

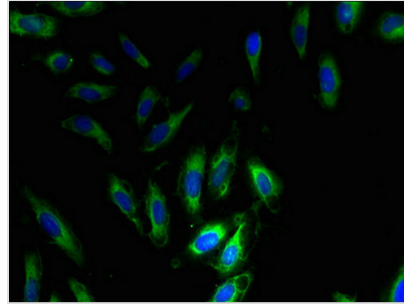
Goat polyclonal to rabbit IgG at 1/15000 dilution

Predicted band size: 9 kDa

Observed band size: 36 kDa



Immunohistochemistry of paraffin-embedded human mammary gland tissue using CSB-PA01535A0Rb at dilution of 1:50



Immunofluorescent analysis of HeLa cells using CSB-PA01535A0Rb at dilution of 1:100 and Alexa Fluor 488-conjugated AffiniPure Goat Anti-Rabbit IgG(H+L)

## Usage

For Research Use Only. Not for use in diagnostic or therapeutic procedures.