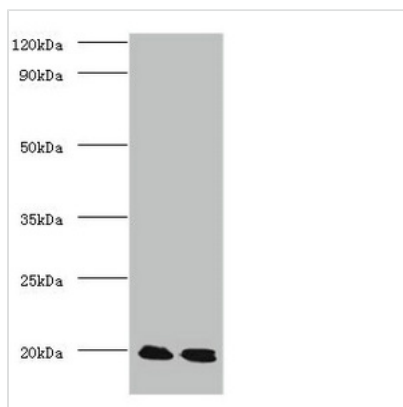




# PARK7 Antibody

<b>Product Code</b>	CSB-PA03724A0Rb
<b>Storage</b>	Upon receipt, store at -20°C or -80°C. Avoid repeated freeze.
<b>Uniprot No.</b>	Q99497
<b>Immunogen</b>	Recombinant Human Protein DJ-1 protein (1-188AA)
<b>Raised In</b>	Rabbit
<b>Species Reactivity</b>	Human, Mouse, Rat
<b>Tested Applications</b>	ELISA, WB, IHC; Recommended dilution: WB:1:1000-1:5000, IHC:1:20-1:200
<b>Form</b>	Liquid
<b>Conjugate</b>	Non-conjugated
<b>Storage Buffer</b>	Preservative: 0.03% Proclin 300 Constituents: 50% Glycerol, 0.01M PBS, PH 7.4
<b>Purification Method</b>	>95%, Protein G purified
<b>Isotype</b>	IgG
<b>Clonality</b>	Polyclonal
<b>Alias</b>	Protein/nucleic acid deglycase DJ-1 (EC 3.1.2.-) (EC 3.5.1.-) (EC 3.5.1.124) (Maillard deglycase) (Oncogene DJ1) (Parkinson disease protein 7) (Parkinsonism-associated deglycase) (Protein DJ-1) (DJ-1), PARK7
<b>Immunogen Species</b>	Homo sapiens (Human)
<b>Research Area</b>	Neuroscience
<b>Target Names</b>	PARK7

## Image



### Western blot

All lanes: Protein DJ-1 antibody at 2 $\mu$ g/ml

Lane 1: EC109 whole cell lysate

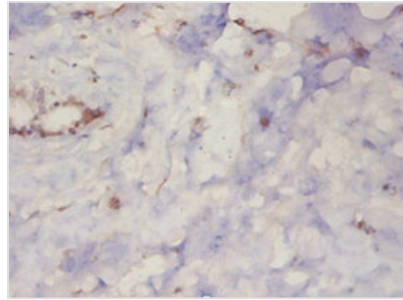
Lane 2: 293T whole cell lysate

Secondary

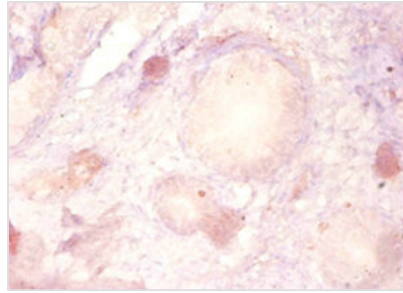
Goat polyclonal to Rabbit IgG at 1/15000 dilution

Predicted band size: 20 kDa

Observed band size: 20 kDa



Immunohistochemistry of paraffin-embedded human mammary gland tissue using CSB-PA03724A0Rb at dilution of 1:50



Immunohistochemistry of paraffin-embedded human prostate tissue using CSB-PA03724A0Rb at dilution of 1:50

## Usage

For Research Use Only. Not for use in diagnostic or therapeutic procedures.