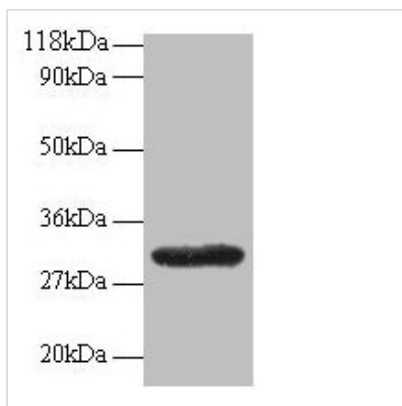




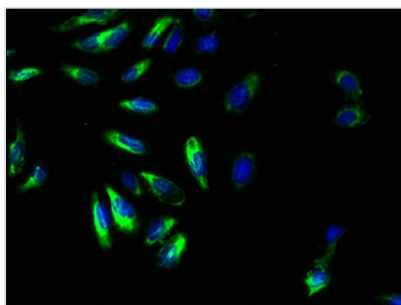
GPR161 Antibody

Product Code	CSB-PA04114A0Rb
Storage	Upon receipt, store at -20°C or -80°C. Avoid repeated freeze.
Uniprot No.	Q8N6U8
Immunogen	Recombinant Human G-protein coupled receptor 161 protein (1-28AA)
Raised In	Rabbit
Species Reactivity	Human
Tested Applications	ELISA, WB, IF; Recommended dilution: WB:1:1000-1:5000, IF:1:50-1:200
Form	Liquid
Conjugate	Non-conjugated
Storage Buffer	Preservative: 0.03% Proclin 300 Constituents: 50% Glycerol, 0.01M PBS, PH 7.4
Purification Method	>95%, Protein G purified
Isotype	IgG
Clonality	Polyclonal
Alias	G-protein coupled receptor 161 (G-protein coupled receptor RE2), GPR161
Immunogen Species	Homo sapiens (Human)
Research Area	Others
Target Names	GPR161

Image



Western blot
All lanes: GPR161 antibody at 2µg/ml + EC109 whole cell lysate
Secondary
Goat polyclonal to rabbit IgG at 1/15000 dilution
Predicted band size: 59, 46, 44, 50, 47, 61 kDa
Observed band size: 30 kDa



Immunofluorescent analysis of HeLa cells using CSB-PA04114A0Rb at dilution of 1:100 and Alexa Fluor 488-conjugated AffiniPure Goat Anti-Rabbit IgG(H+L)



Usage

For Research Use Only. Not for use in diagnostic or therapeutic procedures.