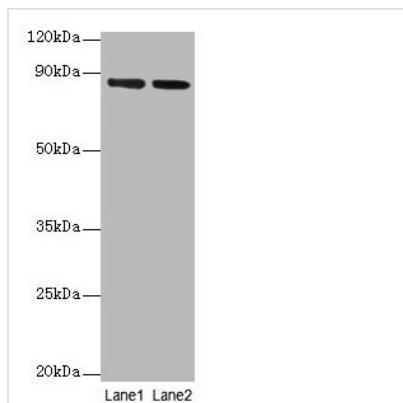




FOLH1 Antibody

| | |
|----------------------------|--|
| Product Code | CSB-PA11729A0Rb |
| Storage | Upon receipt, store at -20°C or -80°C. Avoid repeated freeze. |
| Uniprot No. | Q04609 |
| Immunogen | Recombinant Human Glutamate carboxypeptidase 2 protein (48-750AA) |
| Raised In | Rabbit |
| Species Reactivity | Human |
| Tested Applications | ELISA, WB, IHC; Recommended dilution: WB:1:1000-1:5000, IHC:1:20-1:200 |
| Form | Liquid |
| Conjugate | Non-conjugated |
| Storage Buffer | Preservative: 0.03% Proclin 300 Constituents: 50% Glycerol, 0.01M PBS, PH 7.4 |
| Purification Method | >95%, Protein G purified |
| Isotype | IgG |
| Clonality | Polyclonal |
| Alias | Glutamate carboxypeptidase 2 (EC 3.4.17.21) (Cell growth-inhibiting gene 27 protein) (Folate hydrolase 1) (Folylpoly-gamma-glutamate carboxypeptidase) (FGCP) (Glutamate carboxypeptidase II) (GCPII) (Membrane glutamate carboxypeptidase) (mGCP) (N-acetylated-alpha-linked acidic dipeptidase I) (NAALADase I) (Prostate-specific membrane antigen) (PSM) (PSMA) (Pteroylpoly-gamma-glutamate carboxypeptidase), FOLH1, FOLH NAALAD1 PSM PSMA |
| Immunogen Species | Homo sapiens (Human) |
| Research Area | Signal Transduction |
| Target Names | FOLH1 |

Image



Western blot

All lanes: FOLH1 antibody at 2µg/ml

Lane 1: U251 whole cell lysate

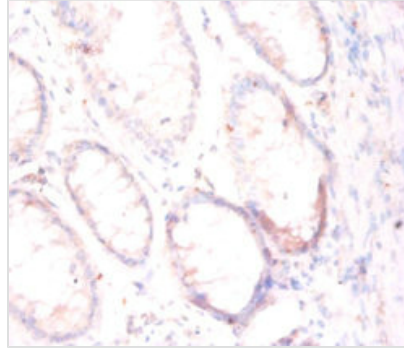
Lane 2: PC-3 whole cell lysate

Secondary

Goat polyclonal to rabbit IgG at 1/10000 dilution

Predicted band size: 85, 13, 10, 78, 83, 81, 79, 51 kDa

Observed band size: 85 kDa



Immunohistochemistry of paraffin-embedded human colon cancer using CSB-PA11729A0Rb at dilution of 1:50

Usage

For Research Use Only. Not for use in diagnostic or therapeutic procedures.