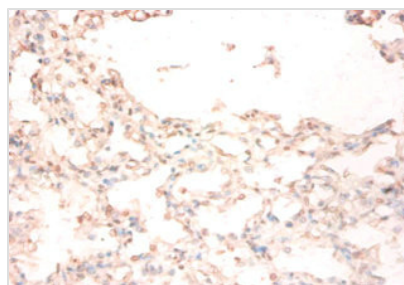




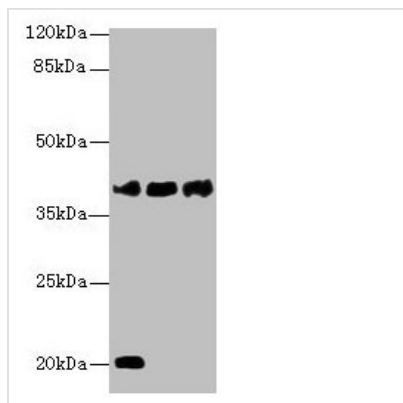
STEAP1 Antibody

Product Code	CSB-PA13354A0Rb
Storage	Upon receipt, store at -20°C or -80°C. Avoid repeated freeze.
Uniprot No.	Q9UHE8
Immunogen	Recombinant Human Metalloreductase STEAP1 protein (3-69AA)
Raised In	Rabbit
Species Reactivity	Human
Tested Applications	ELISA, WB, IHC, IF; Recommended dilution: WB:1:500-1:2000, IHC:1:20-1:200, IF:1:50-1:200
Form	Liquid
Conjugate	Non-conjugated
Storage Buffer	Preservative: 0.03% Proclin 300 Constituents: 50% Glycerol, 0.01M PBS, PH 7.4
Purification Method	>95%, Protein G purified
Isotype	IgG
Clonality	Polyclonal
Alias	Metalloreductase STEAP1 (EC 1.16.1.-) (Six-transmembrane epithelial antigen of prostate 1), STEAP1, PRSS24 STEAP
Immunogen Species	Homo sapiens (Human)
Research Area	Tags & Cell Markers
Target Names	STEAP1

Image



Immunohistochemistry of paraffin-embedded human lung tissue using CSB-PA13354A0Rb at dilution of 1:50

**Western blot**All lanes: STEAP1 antibody at 1 μ g/ml

Lane 1: U87 whole cell lysate

Lane 2: A431 whole cell lysate

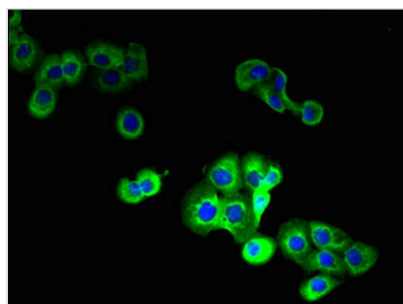
Lane 3: A549 whole cell lysate

Secondary

Goat polyclonal to rabbit IgG at 1/10000 dilution

Predicted band size: 40 kDa

Observed band size: 40 kDa

**Immunofluorescent analysis of A431 cells using**

CSB-PA13354A0Rb at dilution of 1:100 and

Alexa Fluor 488-conjugated AffiniPure Goat

Anti-Rabbit IgG(H+L)

Usage

For Research Use Only. Not for use in diagnostic or therapeutic procedures.