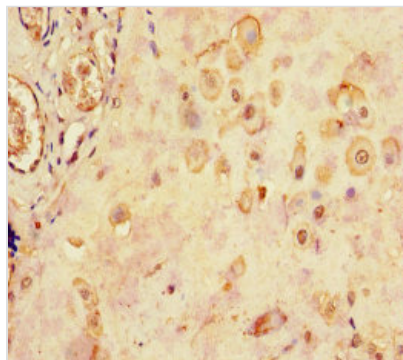




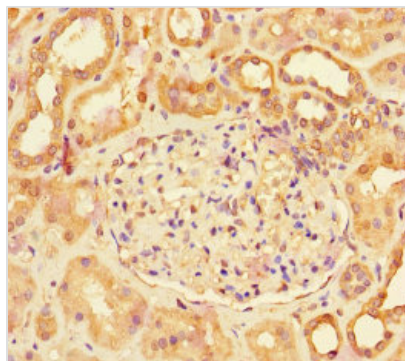
LHB Antibody

Product Code	CSB-PA14659A0Rb
Storage	Upon receipt, store at -20°C or -80°C. Avoid repeated freeze.
Uniprot No.	P01229
Immunogen	Recombinant Human Lutropin subunit beta protein (21-141AA)
Raised In	Rabbit
Species Reactivity	Human
Tested Applications	ELISA, IHC; Recommended dilution: IHC:1:20-1:200
Form	Liquid
Conjugate	Non-conjugated
Storage Buffer	Preservative: 0.03% Proclin 300 Constituents: 50% Glycerol, 0.01M PBS, PH 7.4
Purification Method	>95%, Protein G purified
Isotype	IgG
Clonality	Polyclonal
Alias	Lutropin subunit beta (Lutropin beta chain) (Luteinizing hormone subunit beta) (LH-B) (LSH-B) (LSH-beta), LHB
Immunogen Species	Homo sapiens (Human)
Research Area	Signal Transduction
Target Names	LHB

Image



Immunohistochemistry of paraffin-embedded human placenta tissue using CSB-PA14659A0Rb at dilution of 1:100



Immunohistochemistry of paraffin-embedded human kidney tissue using CSB-PA14659A0Rb at dilution of 1:100

Usage

For Research Use Only. Not for use in diagnostic or therapeutic procedures.