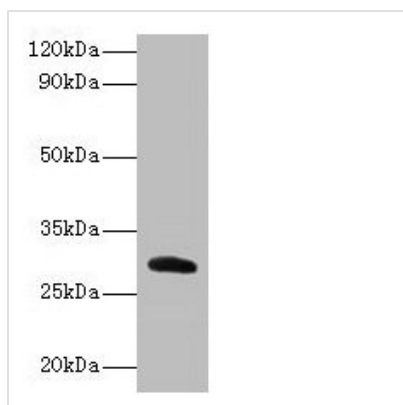




# Cela2a Antibody

<b>Product Code</b>	CSB-PA005196LA01MO
<b>Storage</b>	Upon receipt, store at -20°C or -80°C. Avoid repeated freeze.
<b>Uniprot No.</b>	P05208
<b>Immunogen</b>	Recombinant Mouse Chymotrypsin-like elastase family member 2A protein (31-271AA)
<b>Raised In</b>	Rabbit
<b>Species Reactivity</b>	Mouse
<b>Tested Applications</b>	ELISA, WB; Recommended dilution: WB:1:1000-1:5000
<b>Form</b>	Liquid
<b>Conjugate</b>	Non-conjugated
<b>Storage Buffer</b>	Preservative: 0.03% Proclin 300 Constituents: 50% Glycerol, 0.01M PBS, PH 7.4
<b>Purification Method</b>	>95%, Protein G purified
<b>Isotype</b>	IgG
<b>Clonality</b>	Polyclonal
<b>Alias</b>	Chymotrypsin-like elastase family member 2A (EC 3.4.21.71) (Elastase-2) (Elastase-2A), Cela2a, Ela-2 Ela2 Ela2a
<b>Immunogen Species</b>	Mus musculus (Mouse)
<b>Research Area</b>	Others
<b>Target Names</b>	Cela2a

## Image



### Western blot

All lanes: Cela2a antibody at 2µg/ml +  
Recombinant Chymotrypsin-like elastase family member 2A protein 0.1µg  
Secondary  
Goat polyclonal to rabbit IgG at 1/15000 dilution  
Predicted band size: 29 kDa  
Observed band size: 29 kDa

## Usage

For Research Use Only. Not for use in diagnostic or therapeutic procedures.