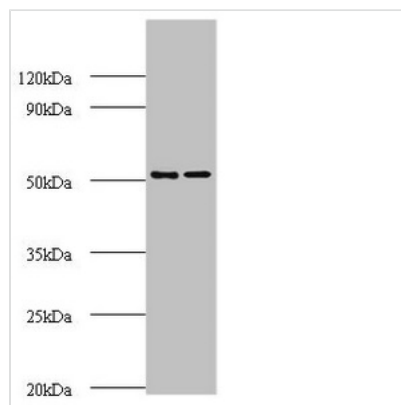




AP2M1 Antibody

Product Code	CSB-PA00627A0Rb
Storage	Upon receipt, store at -20°C or -80°C. Avoid repeated freeze.
Uniprot No.	Q96CW1
Immunogen	Recombinant Human AP-2 complex subunit mu protein (1-435AA)
Raised In	Rabbit
Species Reactivity	Human, Mouse, Rat
Tested Applications	ELISA, WB, IHC; Recommended dilution: WB:1:1000-1:5000, IHC:1:20-1:200
Form	Liquid
Conjugate	Non-conjugated
Storage Buffer	Preservative: 0.03% Proclin 300 Constituents: 50% Glycerol, 0.01M PBS, PH 7.4
Purification Method	>95%, Protein G purified
Isotype	IgG
Clonality	Polyclonal
Alias	AP-2 complex subunit mu (AP-2 mu chain) (Adaptin-mu2) (Adaptor protein complex AP-2 subunit mu) (Adaptor-related protein complex 2 subunit mu) (Clathrin assembly protein complex 2 mu medium chain) (Clathrin coat assembly protein AP50) (Clathrin coat-associated protein AP50) (HA2 50 kDa subunit) (Plasma membrane adaptor AP-2 50 kDa protein), AP2M1, CLAPM1 KIAA0109
Immunogen Species	Homo sapiens (Human)
Research Area	Signal Transduction
Target Names	AP2M1

Image



Western blot

All lanes: AP-2 complex subunit mu polyclonal

Antibody at 2µg/ml

Lane 1: Mouse brain tissue

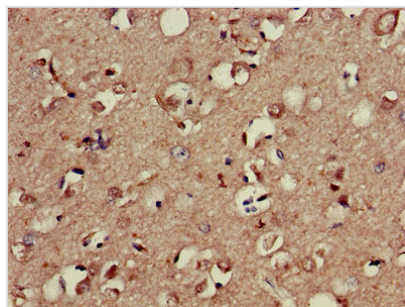
Lane 2: Rat brain tissue

Secondary

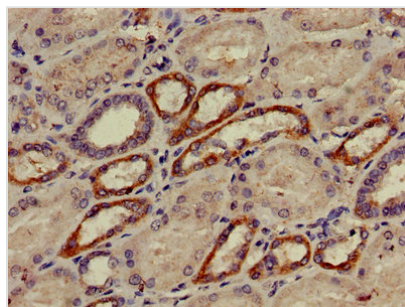
Goat polyclonal to rabbit IgG at 1/10000 dilution

Predicted band size: 50 kDa

Observed band size: 50 kDa



Immunohistochemistry of paraffin-embedded human brain tissue using CSB-PA00627A0Rb at dilution of 1:100



Immunohistochemistry of paraffin-embedded human cervical cancer using CSB-PA00627A0Rb at dilution of 1:100

Usage

For Research Use Only. Not for use in diagnostic or therapeutic procedures.