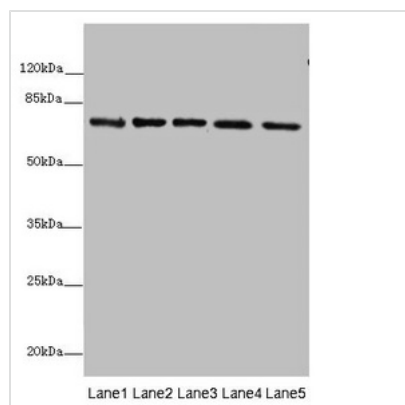




# SDHA Antibody

<b>Product Code</b>	CSB-PA01989A0Rb
<b>Storage</b>	Upon receipt, store at -20°C or -80°C. Avoid repeated freeze.
<b>Uniprot No.</b>	P31040
<b>Immunogen</b>	Recombinant Human Succinate dehydrogenase [ubiquinone] flavoprotein subunit, mitochondrial protein (44-664AA)
<b>Raised In</b>	Rabbit
<b>Species Reactivity</b>	Human, Mouse, Rat, Zebrafish
<b>Tested Applications</b>	ELISA, WB, IHC; Recommended dilution: WB:1:500-1:2000, IHC:1:20-1:200
<b>Form</b>	Liquid
<b>Conjugate</b>	Non-conjugated
<b>Storage Buffer</b>	Preservative: 0.03% Proclin 300 Constituents: 50% Glycerol, 0.01M PBS, PH 7.4
<b>Purification Method</b>	>95%, Protein G purified
<b>Isotype</b>	IgG
<b>Clonality</b>	Polyclonal
<b>Alias</b>	Succinate dehydrogenase [ubiquinone] flavoprotein subunit, mitochondrial (EC 1.3.5.1) (Flavoprotein subunit of complex II) (Fp), SDHA, SDH2 SDHF
<b>Immunogen Species</b>	Homo sapiens (Human)
<b>Research Area</b>	Tags & Cell Markers
<b>Target Names</b>	SDHA

## Image



### Western blot

All lanes: SDHA antibody at 10µg/ml

Lane 1: Rat heart tissue

Lane 2: Mouse spleen tissue

Lane 3: Mouse liver tissue

Lane 4: Hela whole cell lysate

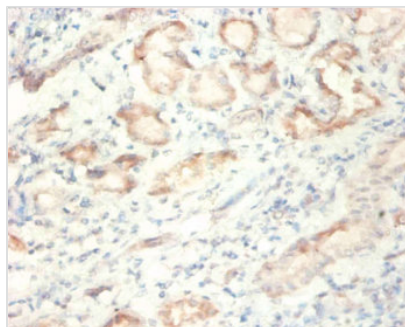
Lane 5: Zebrafish lysate

Secondary

Goat polyclonal to rabbit IgG at 1/10000 dilution

Predicted band size: 73, 68, 57 kDa

Observed band size: 73 kDa



Immunohistochemistry of paraffin-embedded human kidney tissue using CSB-PA01989A0Rb at dilution of 1:50