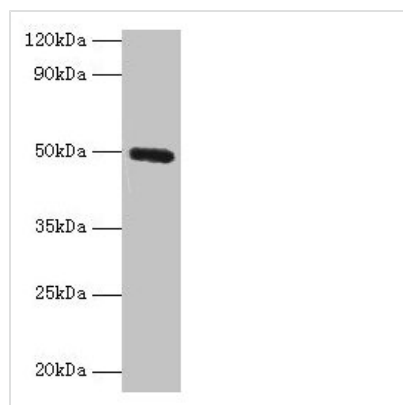




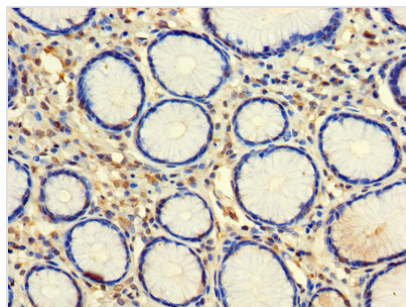
CLEC18A Antibody

Product Code	CSB-PA005521LA01HU
Storage	Upon receipt, store at -20°C or -80°C. Avoid repeated freeze.
Uniprot No.	A5D8T8
Immunogen	Recombinant Human C-type lectin domain family 18 member A protein (27-446AA)
Raised In	Rabbit
Species Reactivity	Human, Mouse
Tested Applications	ELISA, WB, IHC; Recommended dilution: WB:1:1000-1:5000, IHC:1:20-1:200
Form	Liquid
Conjugate	Non-conjugated
Storage Buffer	Preservative: 0.03% Proclin 300 Constituents: 50% Glycerol, 0.01M PBS, PH 7.4
Purification Method	>95%, Protein G purified
Isotype	IgG
Clonality	Polyclonal
Alias	C-type lectin domain family 18 member A (Mannose receptor-like protein 2), CLEC18A, MRLP2
Immunogen Species	Homo sapiens (Human)
Research Area	Others
Target Names	CLEC18A

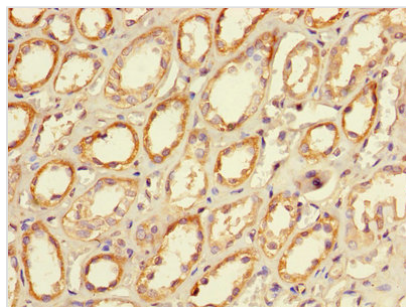
Image



Western blot
 All lanes: CLEC18A antibody at 2µg/ml + Mouse stomach tissue
 Secondary
 Goat polyclonal to rabbit IgG at 1/10000 dilution
 Predicted band size: 50, 12 kDa
 Observed band size: 50 kDa



Immunohistochemistry of paraffin-embedded human stomach tissue using CSB-PA005521LA01HU at dilution of 1:100



Immunohistochemistry of paraffin-embedded human kidney tissue using CSB-PA005521LA01HU at dilution of 1:100

Usage

For Research Use Only. Not for use in diagnostic or therapeutic procedures.