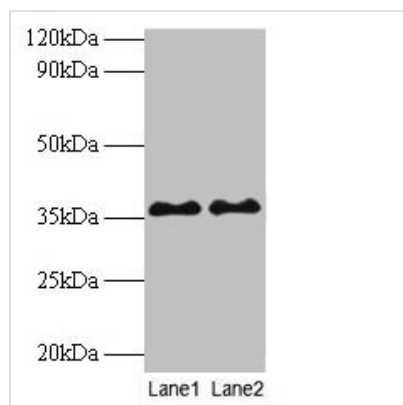




SUPT3H Antibody

Product Code	CSB-PA022956LA01HU
Storage	Upon receipt, store at -20°C or -80°C. Avoid repeated freeze.
Uniprot No.	O75486
Immunogen	Recombinant Human Transcription initiation protein SPT3 homolog protein (1-328AA)
Raised In	Rabbit
Species Reactivity	Human, Mouse
Tested Applications	ELISA, WB, IHC; Recommended dilution: WB:1:1000-1:5000, IHC:1:20-1:200
Form	Liquid
Conjugate	Non-conjugated
Storage Buffer	Preservative: 0.03% Proclin 300 Constituents: 50% Glycerol, 0.01M PBS, PH 7.4
Purification Method	>95%, Protein G purified
Isotype	IgG
Clonality	Polyclonal
Alias	Transcription initiation protein SPT3 homolog (SPT3-like protein), SUPT3H, SPT3
Immunogen Species	Homo sapiens (Human)
Research Area	Others
Target Names	SUPT3H

Image



Western blot

All lanes: SUPT3H antibody at 2µg/ml

Lane 1: Mouse brain tissue

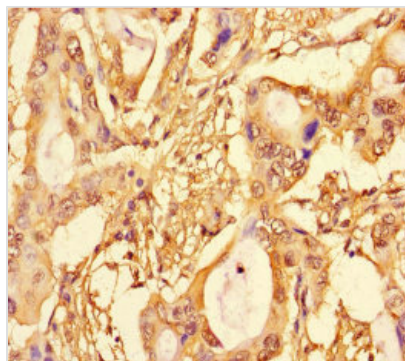
Lane 2: Colo320 whole cell lysate

Secondary

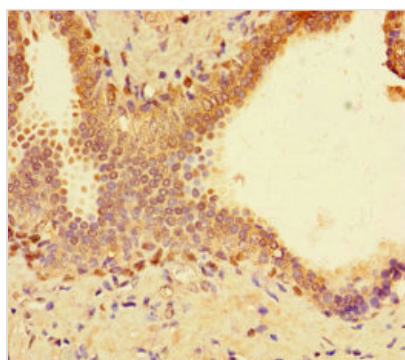
Goat polyclonal to rabbit IgG at 1/10000 dilution

Predicted band size: 36, 38 kDa

Observed band size: 36 kDa



Immunohistochemistry of paraffin-embedded human pancreatic cancer using CSB-PA022956LA01HU at dilution of 1:100



Immunohistochemistry of paraffin-embedded human prostate cancer using CSB-PA022956LA01HU at dilution of 1:100

Usage

For Research Use Only. Not for use in diagnostic or therapeutic procedures.