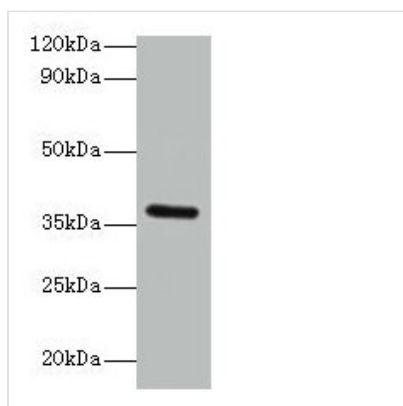




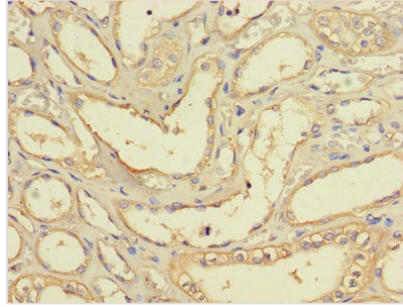
BRCC3 Antibody

Product Code	CSB-PA002798LA01HU
Storage	Upon receipt, store at -20°C or -80°C. Avoid repeated freeze.
Uniprot No.	P46736
Immunogen	Recombinant Human Lys-63-specific deubiquitinase BRCC36 protein (14-316AA)
Raised In	Rabbit
Species Reactivity	Human
Tested Applications	ELISA, WB, IHC; Recommended dilution: WB:1:1000-1:5000, IHC:1:20-1:200
Form	Liquid
Conjugate	Non-conjugated
Storage Buffer	Preservative: 0.03% Proclin 300 Constituents: 50% Glycerol, 0.01M PBS, PH 7.4
Purification Method	>95%, Protein G purified
Isotype	IgG
Clonality	Polyclonal
Alias	Lys-63-specific deubiquitinase BRCC36 (EC 3.4.19.-) (BRCA1-A complex subunit BRCC36) (BRCA1/BRCA2-containing complex subunit 3) (BRCA1/BRCA2-containing complex subunit 36) (BRISC complex subunit BRCC36), BRCC3, BRCC36 C6.1A CXorf53
Immunogen Species	Homo sapiens (Human)
Research Area	Cell Biology
Target Names	BRCC3

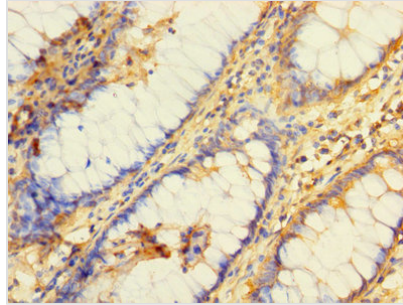
Image



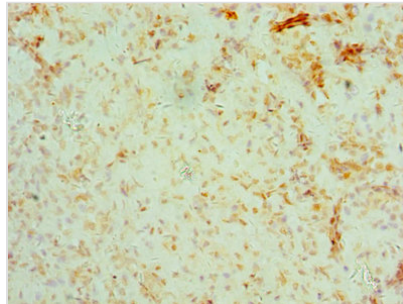
Western blot
 All lanes: BRCC3 antibody at 2µg/ml + K562 whole cell lysate
 Secondary
 Goat polyclonal to rabbit IgG at 1/15000 dilution
 Predicted band size: 37, 34, 24, 29 kDa
 Observed band size: 37 kDa



Immunohistochemistry of paraffin-embedded human kidney tissue using CSB-PA002798LA01HU at dilution of 1:100



Immunohistochemistry of paraffin-embedded human colon tissue using CSB-PA002798LA01HU at dilution of 1:100



Immunohistochemistry of paraffin-embedded human ovarian cancer using CSB-PA002798LA01HU at dilution of 1:100

Usage

For Research Use Only. Not for use in diagnostic or therapeutic procedures.