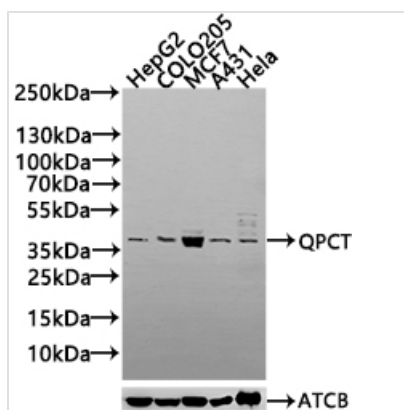




QPCT Antibody

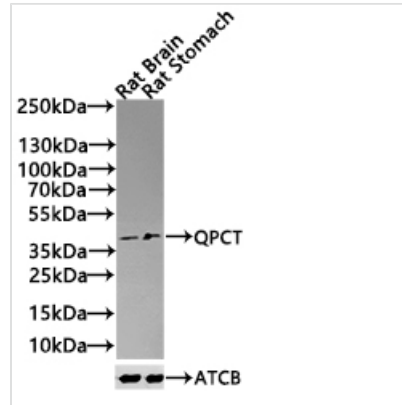
Product Code	CSB-PA019135LA01HU
Storage	Upon receipt, store at -20°C or -80°C. Avoid repeated freeze.
Uniprot No.	Q16769
Immunogen	Recombinant Human Glutaminyl-peptide cyclotransferase protein (29-361AA)
Raised In	Rabbit
Species Reactivity	Human, Rat
Tested Applications	ELISA, WB; Recommended dilution: WB:1:1000-1:5000
Form	Liquid
Conjugate	Non-conjugated
Storage Buffer	Preservative: 0.03% Proclin 300 Constituents: 50% Glycerol, 0.01M PBS, PH 7.4
Purification Method	>95%, Protein G purified
Isotype	IgG
Clonality	Polyclonal
Product Type	Polyclonal Antibody
Immunogen Species	Homo sapiens (Human)
Research Area	Neuroscience
Target Names	QPCT

Image



Western Blot

Positive WB detected in: HepG2 whole cell lysate(30µg), COLO205 whole cell lysate(30µg), MCF7 whole cell lysate(30µg), A431 whole cell lysate(20µg), HeLa whole cell lysate(30µg)
 All lanes: QPCT antibody at 1:1000
 Secondary
 Goat polyclonal to rabbit IgG at 1/40000 dilution
 Predicted band size: 41,36 kDa
 Observed band size: 41 kDa
 Exposure time: 120s

**Western Blot**

Positive WB detected in: Rat Brain tissue lysate(30 μ g), Rat Stomach tissue lysate(30 μ g)

All lanes: QPCT antibody at 1:1000

Secondary

Goat polyclonal to rabbit IgG at 1/40000 dilution

Predicted band size: 41,36 kDa

Observed band size: 41 kDa

Exposure time: 120s

Usage

For Research Use Only. Not for use in diagnostic or therapeutic procedures.