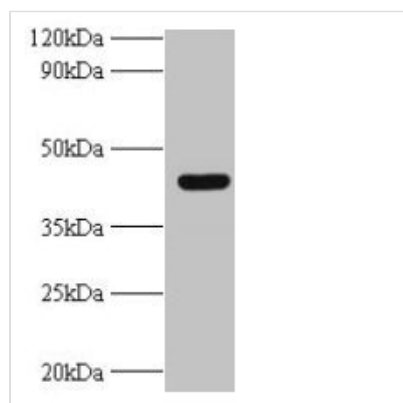




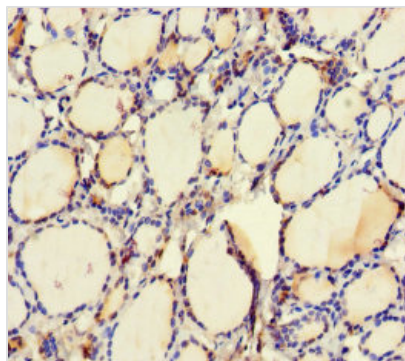
UBE2Q2 Antibody

Product Code	CSB-PA845153HA01HU
Storage	Upon receipt, store at -20°C or -80°C. Avoid repeated freeze.
Uniprot No.	Q8WVN8
Immunogen	Recombinant Human Ubiquitin-conjugating enzyme E2 Q2 protein (1-375AA)
Raised In	Rabbit
Species Reactivity	Human
Tested Applications	ELISA, WB, IHC; Recommended dilution: WB:1:1000-1:5000, IHC:1:20-1:200
Form	Liquid
Conjugate	Non-conjugated
Storage Buffer	Preservative: 0.03% Proclin 300 Constituents: 50% Glycerol, 0.01M PBS, PH 7.4
Purification Method	>95%, Protein G purified
Isotype	IgG
Clonality	Polyclonal
Alias	Ubiquitin-conjugating enzyme E2 Q2 (EC 2.3.2.23) (E2 ubiquitin-conjugating enzyme Q2) (Ubiquitin carrier protein Q2) (Ubiquitin-protein ligase Q2), UBE2Q2
Immunogen Species	Homo sapiens (Human)
Research Area	Epigenetics and Nuclear Signaling
Target Names	UBE2Q2

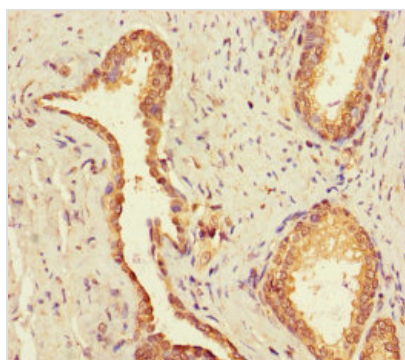
Image



Western blot
All lanes: UBE2Q2 antibody at 2µg/ml + A431 whole cell lysate
Secondary
Goat polyclonal to rabbit IgG at 1/10000 dilution
Predicted band size: 43, 37, 41, 39 kDa
Observed band size: 43 kDa



Immunohistochemistry of paraffin-embedded human thyroid tissue using CSB-PA845153HA01HU at dilution of 1:100



Immunohistochemistry of paraffin-embedded human prostate cancer using CSB-PA845153HA01HU at dilution of 1:100