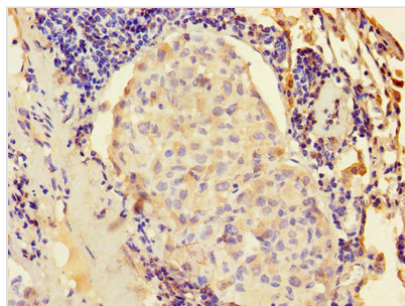




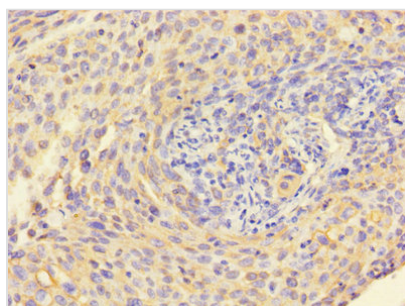
# KRT6A Antibody

<b>Product Code</b>	CSB-PA012561EA01HU
<b>Storage</b>	Upon receipt, store at -20°C or -80°C. Avoid repeated freeze.
<b>Uniprot No.</b>	P02538
<b>Immunogen</b>	Recombinant Human Keratin, type II cytoskeletal 6A protein (2-564AA)
<b>Raised In</b>	Rabbit
<b>Species Reactivity</b>	Human
<b>Tested Applications</b>	ELISA, WB, IHC; Recommended dilution: WB:1:500-1:5000, IHC:1:20-1:200
<b>Form</b>	Liquid
<b>Conjugate</b>	Non-conjugated
<b>Storage Buffer</b>	Preservative: 0.03% Proclin 300 Constituents: 50% Glycerol, 0.01M PBS, PH 7.4
<b>Purification Method</b>	>95%, Protein G purified
<b>Isotype</b>	IgG
<b>Clonality</b>	Polyclonal
<b>Alias</b>	Keratin, type II cytoskeletal 6A (Cytokeratin-6A) (CK-6A) (Cytokeratin-6D) (CK-6D) (Keratin-6A) (K6A) (Type-II keratin Kb6) (allergen Hom s 5), KRT6A, K6A KRT6D
<b>Immunogen Species</b>	Homo sapiens (Human)
<b>Research Area</b>	Tags & Cell Markers
<b>Target Names</b>	KRT6A

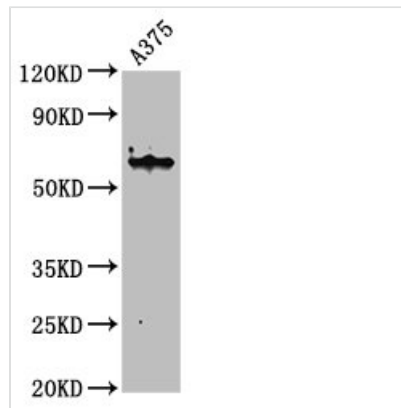
## Image



Immunohistochemistry of paraffin-embedded human lung cancer using CSB-PA012561EA01HU at dilution of 1:100



Immunohistochemistry of paraffin-embedded human cervical cancer using CSB-PA012561EA01HU at dilution of 1:100

**Western Blot**

Positive WB detected in: A375 whole cell lysate

All lanes: KRT6A antibody at 4.6µg/ml

Secondary

Goat polyclonal to rabbit IgG at 1/50000 dilution

Predicted band size: 61 kDa

Observed band size: 61 kDa

**Usage**

For Research Use Only. Not for use in diagnostic or therapeutic procedures.