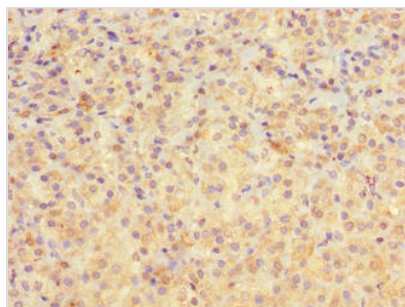




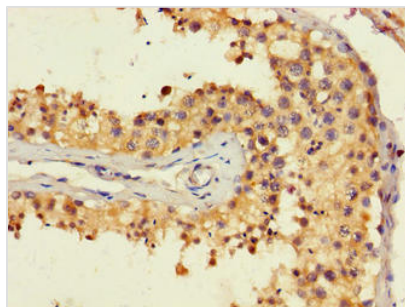
# PEG10 Antibody

<b>Product Code</b>	CSB-PA768203LA01HU
<b>Storage</b>	Upon receipt, store at -20°C or -80°C. Avoid repeated freeze.
<b>Uniprot No.</b>	Q86TG7
<b>Immunogen</b>	Recombinant Human Retrotransposon-derived protein PEG10 protein (1-325AA)
<b>Raised In</b>	Rabbit
<b>Species Reactivity</b>	Human
<b>Tested Applications</b>	ELISA, IHC; Recommended dilution: IHC:1:20-1:200
<b>Form</b>	Liquid
<b>Conjugate</b>	Non-conjugated
<b>Storage Buffer</b>	Preservative: 0.03% Proclin 300 Constituents: 50% Glycerol, 0.01M PBS, PH 7.4
<b>Purification Method</b>	>95%, Protein G purified
<b>Isotype</b>	IgG
<b>Clonality</b>	Polyclonal
<b>Alias</b>	Retrotransposon-derived protein PEG10 (Embryonal carcinoma differentiation-regulated protein) (Mammalian retrotransposon-derived protein 2) (Myelin expression factor 3-like protein 1) (MEF3-like protein 1) (Paternaly expressed gene 10 protein) (Retrotransposon gag domain-containing protein 3) (Retrotransposon-derived gag-like polyprotein) (Ty3/Gypsy-like protein), PEG10, EDR KIAA1051 MAR2 MART2 MEF3L1 RGAG3
<b>Immunogen Species</b>	Homo sapiens (Human)
<b>Research Area</b>	Epigenetics and Nuclear Signaling
<b>Target Names</b>	PEG10

## Image



Immunohistochemistry of paraffin-embedded human adrenal gland tissue using CSB-PA768203LA01HU at dilution of 1:100



Immunohistochemistry of paraffin-embedded human testis tissue using CSB-PA768203LA01HU at dilution of 1:100