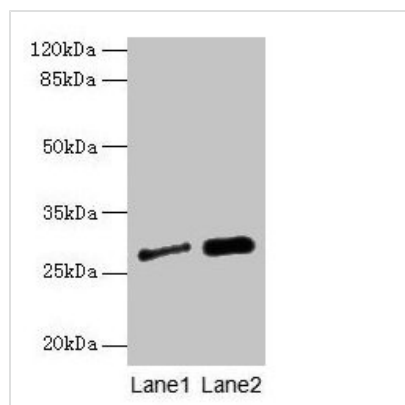




IGFBP1 Antibody

| | |
|----------------------------|------------------------------------------------------------------------------------------------------------------------------------|
| Product Code | CSB-PA08419A0Rb |
| Storage | Upon receipt, store at -20°C or -80°C. Avoid repeated freeze. |
| Uniprot No. | P08833 |
| Immunogen | Recombinant Human Insulin-like growth factor-binding protein 1 protein (26-259AA) |
| Raised In | Rabbit |
| Species Reactivity | Human |
| Tested Applications | ELISA, WB, IHC; Recommended dilution: WB:1:500-1:2000, IHC:1:20-1:200 |
| Form | Liquid |
| Conjugate | Non-conjugated |
| Storage Buffer | Preservative: 0.03% Proclin 300 Constituents: 50% Glycerol, 0.01M PBS, PH 7.4 |
| Purification Method | >95%, Protein G purified |
| Isotype | IgG |
| Clonality | Polyclonal |
| Alias | Insulin-like growth factor-binding protein 1 (IBP-1) (IGF-binding protein 1) (IGFBP-1) (Placental protein 12) (PP12), IGFBP1, IBP1 |
| Immunogen Species | Homo sapiens (Human) |
| Research Area | Signal Transduction |
| Target Names | IGFBP1 |

Image



Western blot

All lanes: IGFBP1 antibody at 3µg/ml

Lane 1: A549 whole cell lysate

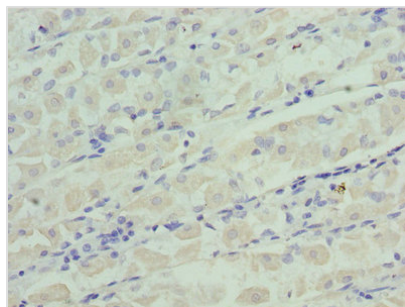
Lane 2: PC-3 whole cell lysate

Secondary

Goat polyclonal to rabbit IgG at 1/10000 dilution

Predicted band size: 28 kDa

Observed band size: 28 kDa



Immunohistochemistry of paraffin-embedded human gastric cancer using CSB-PA08419A0Rb at dilution of 1:100

Usage

For Research Use Only. Not for use in diagnostic or therapeutic procedures.