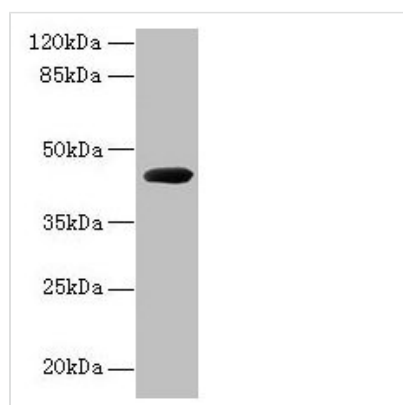




# cpg2 Antibody

<b>Product Code</b>	CSB-PA361895DA01PW
<b>Storage</b>	Upon receipt, store at -20°C or -80°C. Avoid repeated freeze.
<b>Uniprot No.</b>	P06621
<b>Immunogen</b>	Recombinant Pseudomonas sp.Carboxypeptidase G2 protein (23-415AA)
<b>Raised In</b>	Rabbit
<b>Species Reactivity</b>	Pseudomonas sp.
<b>Tested Applications</b>	ELISA, WB; Recommended dilution: WB:1:1000-1:5000
<b>Form</b>	Liquid
<b>Conjugate</b>	Non-conjugated
<b>Storage Buffer</b>	Preservative: 0.1mol/L NaCl, 15mmol/L NaN <sub>3</sub> , PH7.2
<b>Purification Method</b>	>95%, Protein G purified
<b>Isotype</b>	IgG
<b>Clonality</b>	Polyclonal
<b>Alias</b>	Carboxypeptidase G2 (CPDG2) (EC 3.4.17.11) (Folate hydrolase G2) (Glutamate carboxypeptidase) (Pteroylmonoglutamic acid hydrolase G2) (Glucarpidase), cpg2
<b>Immunogen Species</b>	Pseudomonas sp.
<b>Research Area</b>	Others
<b>Target Names</b>	cpg2

## Image



Western blot

All lanes: cpg2 antibody at 2µg/ml +  
Recombinant Carboxypeptidase G2 protein at  
0.5µg

Secondary

Goat polyclonal to rabbit IgG at 1/10000 dilution

Predicted band size: 44 kDa

Observed band size: 44 kDa

## Usage

For Research Use Only. Not for use in diagnostic or therapeutic procedures.