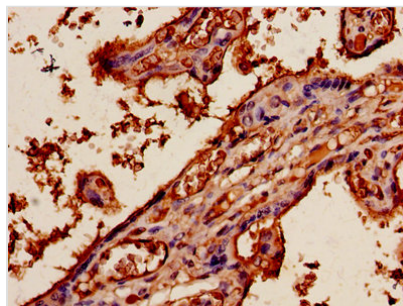




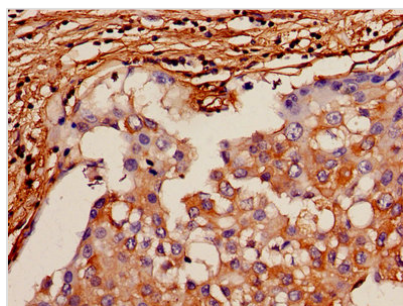
APLN Antibody

Product Code	CSB-PA001909OJ01HU
Storage	Upon receipt, store at -20°C or -80°C. Avoid repeated freeze.
Uniprot No.	Q9ULZ1
Immunogen	Peptide sequence from Human Apelin protein
Raised In	Rabbit
Species Reactivity	Human
Tested Applications	ELISA, IHC; Recommended dilution: IHC:1:20-1:200
Form	Liquid
Conjugate	Non-conjugated
Storage Buffer	Preservative: 0.03% Proclin 300 Constituents: 50% Glycerol, 0.01M PBS, PH 7.4
Purification Method	>95%, Protein G purified
Isotype	IgG
Clonality	Polyclonal
Alias	Apelin (APJ endogenous ligand) [Cleaved into: Apelin-36; Apelin-31; Apelin-28; Apelin-13], APLN, APEL
Immunogen Species	Homo sapiens (Human)
Research Area	Neuroscience
Target Names	APLN

Image



Immunohistochemistry of paraffin-embedded human placenta tissue using CSB-PA001909OJ01HU at dilution of 1:100



Immunohistochemistry of paraffin-embedded human breast cancer using CSB-PA001909OJ01HU at dilution of 1:100



Usage

For Research Use Only. Not for use in diagnostic or therapeutic procedures.