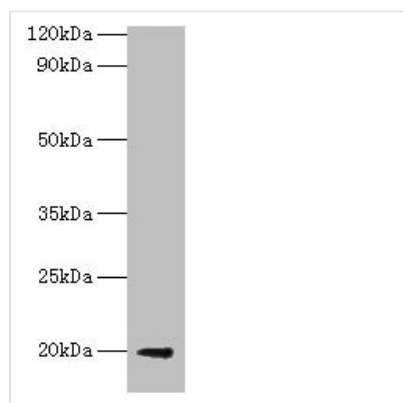




# luxS Antibody

<b>Product Code</b>	CSB-PA541717HA01ENV
<b>Storage</b>	Upon receipt, store at -20°C or -80°C. Avoid repeated freeze.
<b>Uniprot No.</b>	P45578
<b>Immunogen</b>	Recombinant Escherichia coli S-ribosylhomocysteine lyase protein (2-171AA)
<b>Raised In</b>	Rabbit
<b>Species Reactivity</b>	Escherichia coli
<b>Tested Applications</b>	ELISA, WB; Recommended dilution: WB:1:1000-1:5000
<b>Form</b>	Liquid
<b>Conjugate</b>	Non-conjugated
<b>Storage Buffer</b>	Preservative: 0.03% Proclin 300 Constituents: 50% Glycerol, 0.01M PBS, PH 7.4
<b>Purification Method</b>	>95%, Protein G purified
<b>Isotype</b>	IgG
<b>Clonality</b>	Polyclonal
<b>Alias</b>	S-ribosylhomocysteine lyase (EC 4.4.1.21) (AI-2 synthesis protein) (Autoinducer-2 production protein LuxS), luxS, ygaG
<b>Immunogen Species</b>	Escherichia coli
<b>Research Area</b>	Others
<b>Target Names</b>	luxS

## Image



Western blot  
All lanes: luxS antibody at 2µg/ml + DH5a whole cell lysate  
Secondary  
Goat polyclonal to rabbit IgG at 1/10000 dilution  
Predicted band size: 20 kDa  
Observed band size: 20 kDa