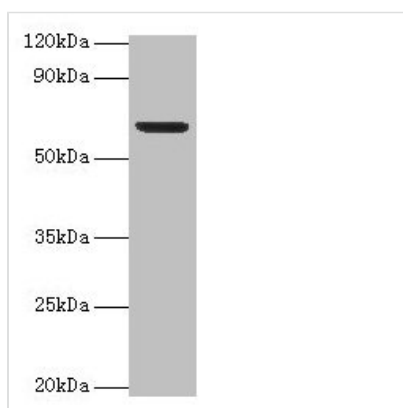




# Plbd2 Antibody

<b>Product Code</b>	CSB-PA018125LA01MO
<b>Storage</b>	Upon receipt, store at -20°C or -80°C. Avoid repeated freeze.
<b>Uniprot No.</b>	Q3TCN2
<b>Immunogen</b>	Recombinant Mouse Putative phospholipase B-like 2 protein (47-594AA)
<b>Raised In</b>	Rabbit
<b>Species Reactivity</b>	Mouse
<b>Tested Applications</b>	ELISA, WB; Recommended dilution: WB:1:1000-1:5000
<b>Form</b>	Liquid
<b>Conjugate</b>	Non-conjugated
<b>Storage Buffer</b>	Preservative: 0.03% Proclin 300 Constituents: 50% Glycerol, 0.01M PBS, PH 7.4
<b>Purification Method</b>	>95%, Protein G purified
<b>Isotype</b>	IgG
<b>Clonality</b>	Polyclonal
<b>Alias</b>	Putative phospholipase B-like 2 (EC 3.1.1.-) (66.3 kDa protein) (76 kDa protein) (p76) (LAMA-like protein 2) (Lamina ancestor homolog 2) (Phospholipase B domain-containing protein 2) [Cleaved into: Putative phospholipase B-like 2 28 kDa form; Putative phospholipase B-like 2 40 kDa form; Putative phospholipase B-like 2 15 kDa form], Plbd2
<b>Immunogen Species</b>	Mus musculus (Mouse)
<b>Research Area</b>	Signal Transduction
<b>Target Names</b>	Plbd2

## Image



Western blot  
All lanes: Plbd2 antibody at 2µg/ml + Mouse brain tissue  
Secondary  
Goat polyclonal to rabbit IgG at 1/15000 dilution  
Predicted band size: 67, 50 kDa  
Observed band size: 67 kDa

**Usage** For Research Use Only. Not for use in diagnostic or therapeutic procedures.