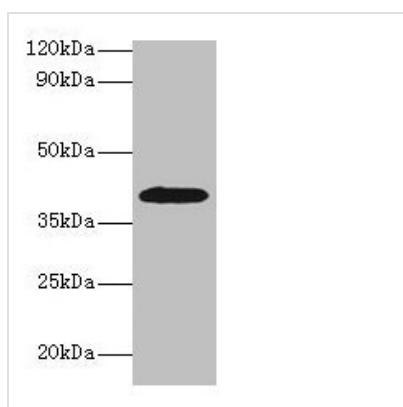




ADH1B Antibody

Product Code	CSB-PA001354HA01HU
Storage	Upon receipt, store at -20°C or -80°C. Avoid repeated freeze.
Uniprot No.	P00325
Immunogen	Recombinant Human Alcohol dehydrogenase 1B protein (2-375AA)
Raised In	Rabbit
Species Reactivity	Human
Tested Applications	ELISA, WB, IHC, IF; Recommended dilution: WB:1:1000-1:5000, IHC:1:20-1:200, IF:1:50-1:200
Form	Liquid
Conjugate	Non-conjugated
Storage Buffer	Preservative: 0.03% Proclin 300 Constituents: 50% Glycerol, 0.01M PBS, PH 7.4
Purification Method	>95%, Protein G purified
Isotype	IgG
Clonality	Polyclonal
Alias	Alcohol dehydrogenase 1B (EC 1.1.1.1) (Alcohol dehydrogenase subunit beta), ADH1B, ADH2
Immunogen Species	Homo sapiens (Human)
Research Area	Signal Transduction
Target Names	ADH1B

Image



Western blot

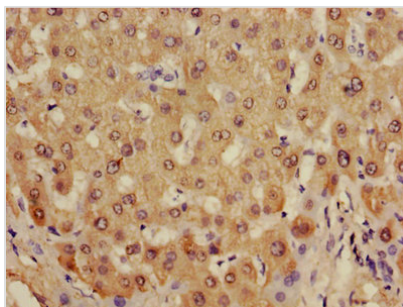
All lanes: ADH1B antibody at 2µg/ml + HepG2 whole cell lysate

Secondary

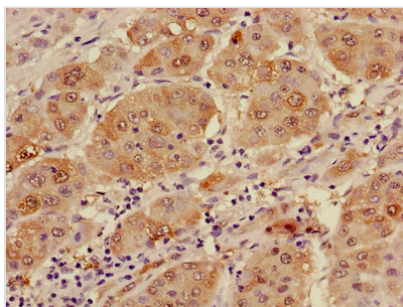
Goat polyclonal to rabbit IgG at 1/15000 dilution

Predicted band size: 40, 36 kDa

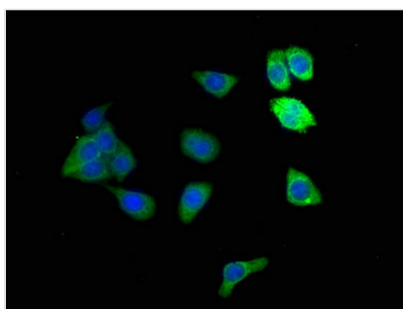
Observed band size: 40 kDa



Immunohistochemistry of paraffin-embedded human liver tissue using CSB-PA001354HA01HU at dilution of 1:100



Immunohistochemistry of paraffin-embedded human liver cancer using CSB-PA001354HA01HU at dilution of 1:100



Immunofluorescence staining of HepG2 cells with CSB-PA001354HA01HU at 1:166, counter-stained with DAPI. The cells were fixed in 4% formaldehyde, permeabilized using 0.2% Triton X-100 and blocked in 10% normal Goat Serum. The cells were then incubated with the antibody overnight at 4°C. The secondary antibody was Alexa Fluor 488-conjugated AffiniPure Goat Anti-Rabbit IgG(H+L).

Usage

For Research Use Only. Not for use in diagnostic or therapeutic procedures.