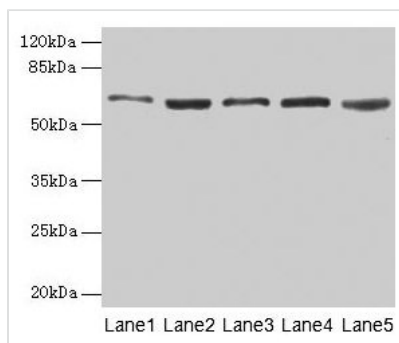




STIP1 Antibody

Product Code	CSB-PA022831HA01HU
Storage	Upon receipt, store at -20°C or -80°C. Avoid repeated freeze.
Uniprot No.	P31948
Immunogen	Recombinant Human Stress-induced-phosphoprotein 1 protein (1-543AA)
Raised In	Rabbit
Species Reactivity	Human, Mouse, Rat
Tested Applications	ELISA, WB, IHC; Recommended dilution: WB:1:500-1:5000, IHC:1:20-1:200
Form	Liquid
Conjugate	Non-conjugated
Storage Buffer	Preservative: 0.03% Proclin 300 Constituents: 50% Glycerol, 0.01M PBS, PH 7.4
Purification Method	>95%, Protein G purified
Isotype	IgG
Clonality	Polyclonal
Alias	Stress-induced-phosphoprotein 1 (STI1) (Hsc70/Hsp90-organizing protein) (Hop) (Renal carcinoma antigen NY-REN-11) (Transformation-sensitive protein IEF SSP 3521), STIP1
Immunogen Species	Homo sapiens (Human)
Research Area	Signal Transduction
Target Names	STIP1

Image



Western blot

All lanes: STIP1 antibody at 12µg/ml

Lane 1: HeLa whole cell lysate

Lane 2: HepG2 whole cell lysate

Lane 3: NIH/3T3 whole cell lysate

Lane 4: Jurkat whole cell lysate

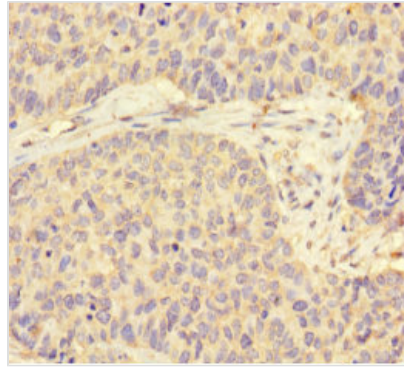
Lane 5: Rat gonadal tissue

Secondary

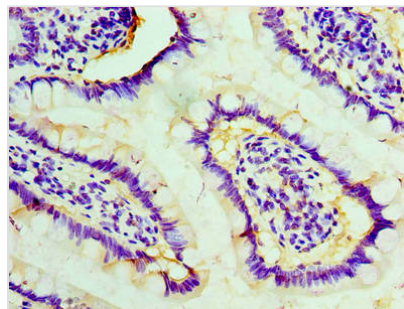
Goat polyclonal to rabbit IgG at 1/10000 dilution

Predicted band size: 63, 69, 60 kDa

Observed band size: 63 kDa



Immunohistochemistry of paraffin-embedded human ovarian cancer using CSB-PA022831HA01HU at dilution of 1:100



Immunohistochemistry of paraffin-embedded human small intestine tissue using CSB-PA022831HA01HU at dilution of 1:100

Usage

For Research Use Only. Not for use in diagnostic or therapeutic procedures.