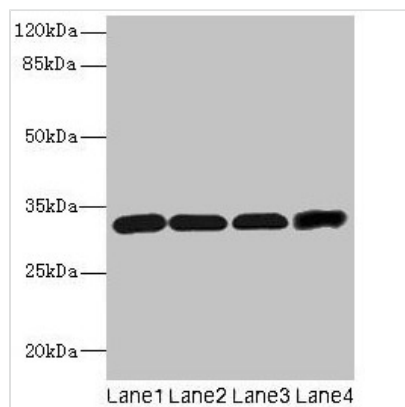




# Ms4a1 Antibody

<b>Product Code</b>	CSB-PA015007LA01MO
<b>Storage</b>	Upon receipt, store at -20°C or -80°C. Avoid repeated freeze.
<b>Uniprot No.</b>	P19437
<b>Immunogen</b>	Recombinant Mouse B-lymphocyte antigen CD20 protein (111-291AA)
<b>Raised In</b>	Rabbit
<b>Species Reactivity</b>	Mouse, Human
<b>Tested Applications</b>	ELISA, WB; Recommended dilution: WB:1:1000-1:5000
<b>Form</b>	Liquid
<b>Conjugate</b>	Non-conjugated
<b>Storage Buffer</b>	Preservative: 0.03% Proclin 300 Constituents: 50% Glycerol, 0.01M PBS, PH 7.4
<b>Purification Method</b>	>95%, Protein G purified
<b>Isotype</b>	IgG
<b>Clonality</b>	Polyclonal
<b>Alias</b>	B-lymphocyte antigen CD20 (B-cell differentiation antigen Ly-44) (Lymphocyte antigen 44) (Membrane-spanning 4-domains subfamily A member 1) (CD antigen CD20), Ms4a1, Cd20 Ly-44 Ms4a2
<b>Immunogen Species</b>	Mus musculus (Mouse)
<b>Research Area</b>	Immunology
<b>Target Names</b>	Ms4a1

## Image



### Western blot

All lanes: Ms4a1 antibody at 4μg/ml

Lane 1: Hela whole cell lysate

Lane 2: Jurkat whole cell lysate

Lane 3: 293T whole cell lysate

Lane 4: HL60 whole cell lysate

Secondary

Goat polyclonal to rabbit IgG at 1/10000 dilution

Predicted band size: 32 kDa

Observed band size: 32 kDa