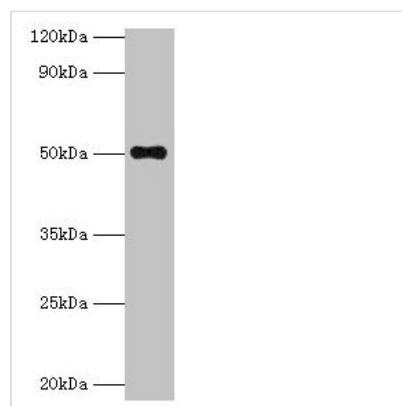




TMLHE Antibody

Product Code	CSB-PA023908LA01HU
Storage	Upon receipt, store at -20°C or -80°C. Avoid repeated freeze.
Uniprot No.	Q9NVH6
Immunogen	Recombinant Human Trimethyllysine dioxygenase, mitochondrial protein (16-376AA)
Raised In	Rabbit
Species Reactivity	Human
Tested Applications	ELISA, WB, IHC; Recommended dilution: WB:1:500-1:5000, IHC:1:20-1:200
Form	Liquid
Conjugate	Non-conjugated
Storage Buffer	Preservative: 0.03% Proclin 300 Constituents: 50% Glycerol, 0.01M PBS, PH 7.4
Purification Method	>95%, Protein G purified
Isotype	IgG
Clonality	Polyclonal
Alias	Trimethyllysine dioxygenase, mitochondrial (EC 1.14.11.8) (Epsilon-trimethyllysine 2-oxoglutarate dioxygenase) (Epsilon-trimethyllysine hydroxylase) (TML hydroxylase) (TML-alpha-ketoglutarate dioxygenase) (TML dioxygenase) (TMLD), TMLHE, TMLH
Immunogen Species	Homo sapiens (Human)
Research Area	Signal Transduction
Target Names	TMLHE

Image



Western blot

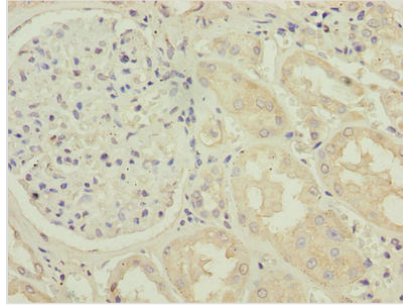
All lanes: TMLHE antibody at 2µg/ml + MCF-7 whole cell lysate

Secondary

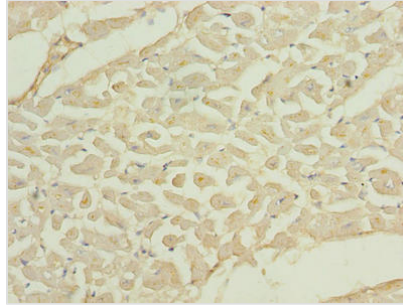
Goat polyclonal to rabbit IgG at 1/10000 dilution

Predicted band size: 50, 47, 39, 45, 43, 42, 51 kDa

Observed band size: 50 kDa



Immunohistochemistry of paraffin-embedded human kidney tissue using CSB-PA023908LA01HU at dilution of 1:100



Immunohistochemistry of paraffin-embedded human heart tissue using CSB-PA023908LA01HU at dilution of 1:100

Usage

For Research Use Only. Not for use in diagnostic or therapeutic procedures.