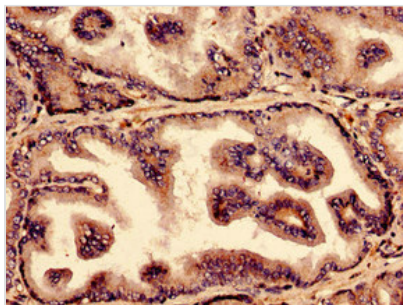




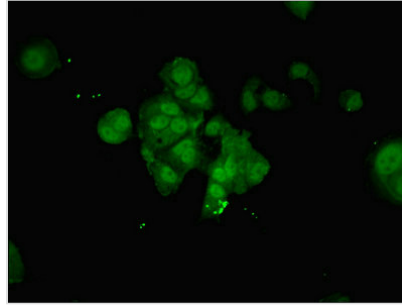
NUP210 Antibody

Product Code	CSB-PA016195LA01HU
Storage	Upon receipt, store at -20°C or -80°C. Avoid repeated freeze.
Uniprot No.	Q8TEM1
Immunogen	Recombinant Human Nuclear pore membrane glycoprotein 210 protein (28-238AA)
Raised In	Rabbit
Species Reactivity	Human
Tested Applications	ELISA, IHC, IF; Recommended dilution: IHC:1:20-1:200, IF:1:50-1:200
Form	Liquid
Conjugate	Non-conjugated
Storage Buffer	Preservative: 0.03% Proclin 300 Constituents: 50% Glycerol, 0.01M PBS, PH 7.4
Purification Method	>95%, Protein G purified
Isotype	IgG
Clonality	Polyclonal
Alias	Nuclear pore membrane glycoprotein 210 (Nuclear pore protein gp210) (Nuclear envelope pore membrane protein POM 210) (POM210) (Nucleoporin Nup210) (Pore membrane protein of 210 kDa), NUP210, KIAA0906
Immunogen Species	Homo sapiens (Human)
Research Area	Tags & Cell Markers
Target Names	NUP210

Image



Immunocytochemistry analysis of human prostate tissue using CSB-PA016195LA01HU at dilution of 1:100



Immunofluorescent analysis of MCF-7 cells using CSB-PA016195LA01HU at dilution of 1:100 and Alexa Fluor 488-conjugated AffiniPure Goat Anti-Rabbit IgG(H+L)

Usage

For Research Use Only. Not for use in diagnostic or therapeutic procedures.