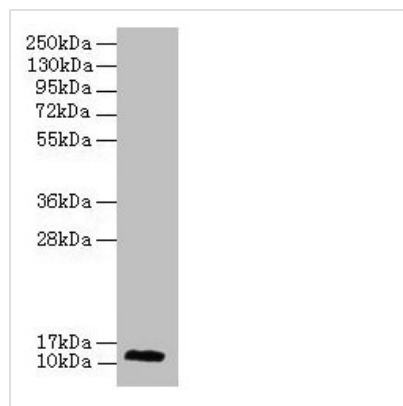




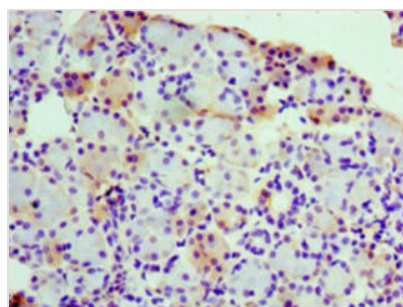
RPL30 Antibody

Product Code	CSB-PA020225DA01HU
Storage	Upon receipt, store at -20°C or -80°C. Avoid repeated freeze.
Uniprot No.	P62888
Immunogen	Recombinant Human 60S ribosomal protein L30 protein (1-115AA)
Raised In	Rabbit
Species Reactivity	Human
Tested Applications	ELISA, WB, IHC; Recommended dilution: WB:1:500-1:5000, IHC:1:20-1:200
Form	Liquid
Conjugate	Non-conjugated
Storage Buffer	Preservative: 0.03% Proclin 300 Constituents: 50% Glycerol, 0.01M PBS, PH 7.4
Purification Method	>95%, Protein G purified
Isotype	IgG
Clonality	Polyclonal
Alias	60S ribosomal protein L30 (Large ribosomal subunit protein eL30), RPL30
Immunogen Species	Homo sapiens (Human)
Research Area	Others
Target Names	RPL30

Image



Western blot
All lanes: RPL30 antibody at 2µg/ml + A549 whole cell lysate
Secondary
Goat polyclonal to rabbit IgG at 1/15000 dilution
Predicted band size: 13 kDa
Observed band size: 13 kDa



Immunohistochemistry of paraffin-embedded human pancreatic tissue using CSB-PA020225DA01HU at dilution of 1:100

