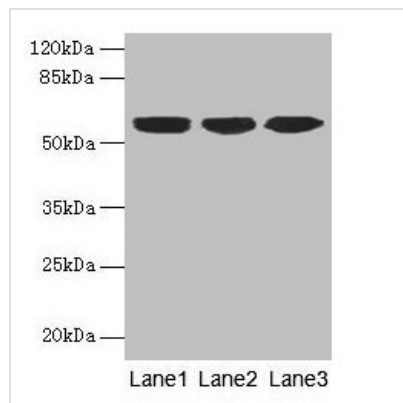




KRT10 Antibody

Product Code	CSB-PA012504LA01HU
Storage	Upon receipt, store at -20°C or -80°C. Avoid repeated freeze.
Uniprot No.	P13645
Immunogen	Recombinant Human Keratin, type I cytoskeletal 10 protein (1-584AA)
Raised In	Rabbit
Species Reactivity	Human
Tested Applications	ELISA, WB, IHC, IF; Recommended dilution: WB:1:500-1:2000, IHC:1:20-1:200, IF:1:50-1:200
Form	Liquid
Conjugate	Non-conjugated
Storage Buffer	Preservative: 0.03% Proclin 300 Constituents: 50% Glycerol, 0.01M PBS, PH 7.4
Purification Method	>95%, Protein G purified
Isotype	IgG
Clonality	Polyclonal
Alias	Keratin, type I cytoskeletal 10 (Cytokeratin-10) (CK-10) (Keratin-10) (K10), KRT10, KPP
Immunogen Species	Homo sapiens (Human)
Research Area	Signal Transduction
Target Names	KRT10

Image



Western blot

All lanes: KRT10 antibody at 6µg/ml

Lane 1: A431 whole cell lysate

Lane 2: HepG2 whole cell lysate

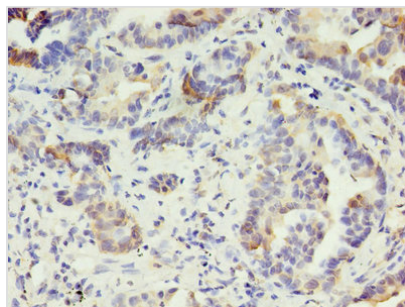
Lane 3: MCF-7 whole cell lysate

Secondary

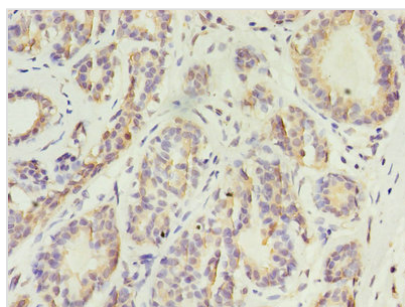
Goat polyclonal to rabbit IgG at 1/10000 dilution

Predicted band size: 59 kDa

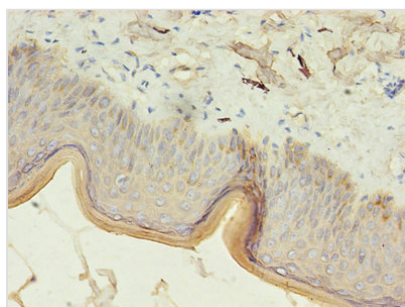
Observed band size: 59 kDa



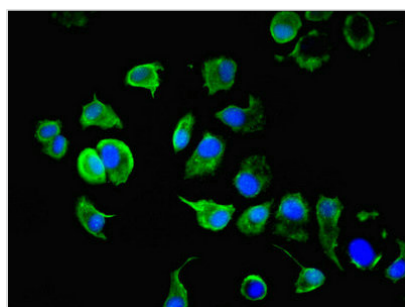
Immunohistochemistry of paraffin-embedded human lung cancer using CSB-PA012504LA01HU at dilution of 1:100



Immunohistochemistry of paraffin-embedded human breast cancer using CSB-PA012504LA01HU at dilution of 1:100



Immunohistochemistry of paraffin-embedded human skin tissue using CSB-PA012504LA01HU at dilution of 1:100



Immunofluorescent analysis of MCF-7 cells using CSB-PA012504LA01HU at dilution of 1:100 and Alexa Fluor 488-conjugated AffiniPure Goat Anti-Rabbit IgG(H+L)

Usage

For Research Use Only. Not for use in diagnostic or therapeutic procedures.