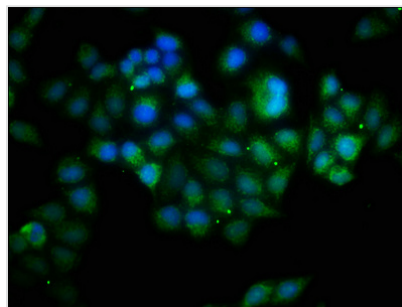




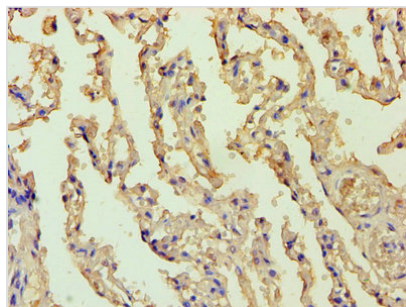
BCL10 Antibody

Product Code	CSB-PA002608HA01HU
Storage	Upon receipt, store at -20°C or -80°C. Avoid repeated freeze.
Uniprot No.	O95999
Immunogen	Recombinant Human B-cell lymphoma/leukemia 10 protein (1-233AA)
Raised In	Rabbit
Species Reactivity	Human
Tested Applications	ELISA, IHC, IF; Recommended dilution: IHC:1:20-1:200, IF:1:50-1:200
Form	Liquid
Conjugate	Non-conjugated
Storage Buffer	Preservative: 0.03% Proclin 300 Constituents: 50% Glycerol, 0.01M PBS, PH 7.4
Purification Method	>95%, Protein G purified
Isotype	IgG
Clonality	Polyclonal
Alias	B-cell lymphoma/leukemia 10 (B-cell CLL/lymphoma 10) (Bcl-10) (CARD-containing molecule enhancing NF-kappa-B) (CARD-like apoptotic protein) (hCLAP) (CED-3/ICH-1 prodomain homologous E10-like regulator) (CIPER) (Cellular homolog of vCARMEN) (cCARMEN) (Cellular-E10) (c-E10) (Mammalian CARD-containing adapter molecule E10) (mE10), BCL10, CIPER CLAP
Immunogen Species	Homo sapiens (Human)
Research Area	Cell Biology
Target Names	BCL10

Image



Immunofluorescence staining of HeLa cells with CSB-PA002608HA01HU at 1:133, counter-stained with DAPI. The cells were fixed in 4% formaldehyde, permeabilized using 0.2% Triton X-100 and blocked in 10% normal Goat Serum. The cells were then incubated with the antibody overnight at 4°C. The secondary antibody was Alexa Fluor 488-conjugated AffiniPure Goat Anti-Rabbit IgG(H+L).



Immunohistochemistry of paraffin-embedded human lung tissue using CSB-PA002608HA01HU at dilution of 1:100

Usage

For Research Use Only. Not for use in diagnostic or therapeutic procedures.