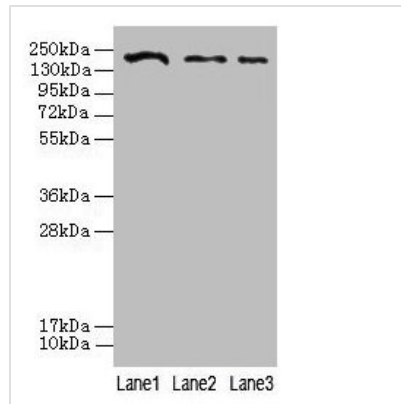




CLTCL1 Antibody

Product Code	CSB-PA005594LA01HU
Storage	Upon receipt, store at -20°C or -80°C. Avoid repeated freeze.
Uniprot No.	P53675
Immunogen	Recombinant Human Clathrin heavy chain 2 protein (1423-1566AA)
Raised In	Rabbit
Species Reactivity	Human, Mouse
Tested Applications	ELISA, WB, IHC, IF; Recommended dilution: WB:1:1000-1:5000, IHC:1:20-1:200, IF:1:50-1:200
Form	Liquid
Conjugate	Non-conjugated
Storage Buffer	Preservative: 0.03% Proclin 300 Constituents: 50% Glycerol, 0.01M PBS, PH 7.4
Purification Method	>95%, Protein G purified
Isotype	IgG
Clonality	Polyclonal
Alias	Clathrin heavy chain 2 (Clathrin heavy chain on chromosome 22) (CLH-22), CLTCL1, CLH22 CLTCL CLTD
Immunogen Species	Homo sapiens (Human)
Research Area	Signal Transduction
Target Names	CLTCL1

Image



Western blot

All lanes: CLTCL1 antibody at 2µg/ml

Lane 1: Jurkat whole cell lysate

Lane 2: NIH/3T3 whole cell lysate

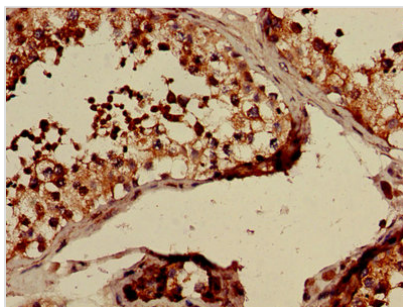
Lane 3: A431 whole cell lysate

Secondary

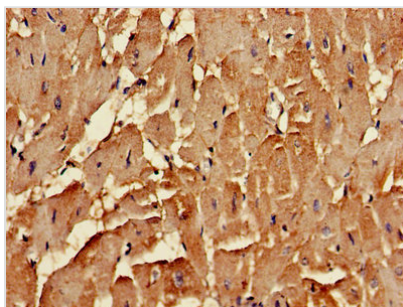
Goat polyclonal to rabbit IgG at 1/10000 dilution

Predicted band size: 188, 181 kDa

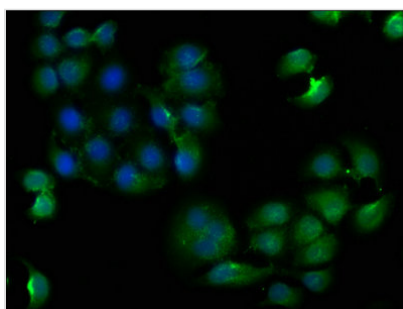
Observed band size: 188 kDa



Immunohistochemistry of paraffin-embedded human testis tissue using CSB-PA005594LA01HU at dilution of 1:100



Immunohistochemistry of paraffin-embedded human heart tissue using CSB-PA005594LA01HU at dilution of 1:100



Immunofluorescence staining of A549 cells with CSB-PA005594LA01HU at 1:133, counter-stained with DAPI. The cells were fixed in 4% formaldehyde, permeabilized using 0.2% Triton X-100 and blocked in 10% normal Goat Serum. The cells were then incubated with the antibody overnight at 4°C. The secondary antibody was Alexa Fluor 488-conjugated AffiniPure Goat Anti-Rabbit IgG(H+L).

Usage

For Research Use Only. Not for use in diagnostic or therapeutic procedures.