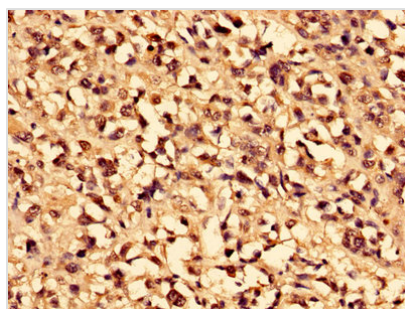




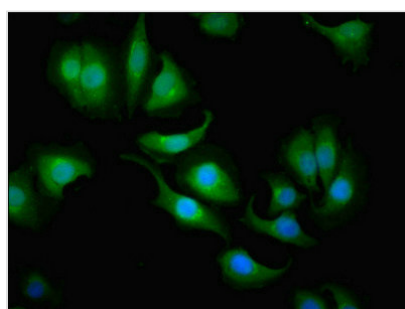
# CA1 Antibody

<b>Product Code</b>	CSB-PA004364HA01HU
<b>Storage</b>	Upon receipt, store at -20°C or -80°C. Avoid repeated freeze.
<b>Uniprot No.</b>	P00915
<b>Immunogen</b>	Recombinant Human Carbonic anhydrase 1 protein (2-261AA)
<b>Raised In</b>	Rabbit
<b>Species Reactivity</b>	Human, Mouse
<b>Tested Applications</b>	ELISA, WB, IHC, IF, IP; Recommended dilution: WB:1:500-1:5000, IHC:1:20-1:200, IF:1:50-1:200, IP:1:200-1:2000
<b>Form</b>	Liquid
<b>Conjugate</b>	Non-conjugated
<b>Storage Buffer</b>	Preservative: 0.03% Proclin 300 Constituents: 50% Glycerol, 0.01M PBS, PH 7.4
<b>Purification Method</b>	>95%, Protein G purified
<b>Isotype</b>	IgG
<b>Clonality</b>	Polyclonal
<b>Alias</b>	Carbonic anhydrase 1 (EC 4.2.1.1) (Carbonate dehydratase I) (Carbonic anhydrase B) (CAB) (Carbonic anhydrase I) (CA-I), CA1
<b>Immunogen Species</b>	Homo sapiens (Human)
<b>Research Area</b>	Cardiovascular
<b>Target Names</b>	CA1

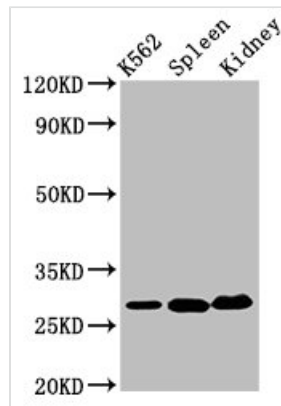
## Image



Immunohistochemistry of paraffin-embedded human melanoma using CSB-PA004364HA01HU at dilution of 1:100



Immunofluorescent analysis of A549 cells using CSB-PA004364HA01HU at dilution of 1:100 and Alexa Fluor 488-conjugated AffiniPure Goat Anti-Rabbit IgG(H+L)


**Western Blot**

Positive WB detected in: K562 whole cell lysate, Mouse spleen tissue, Mouse kidney tissue

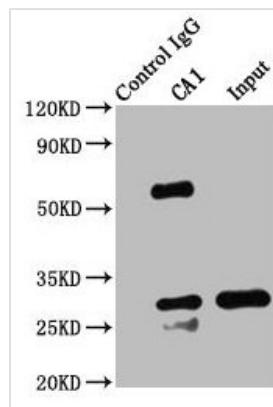
All lanes: CA1 antibody at 6.5µg/ml

Secondary

Goat polyclonal to rabbit IgG at 1/50000 dilution

Predicted band size: 29 kDa

Observed band size: 29 kDa



Immunoprecipitating CA1 in K562 whole cell lysate

Lane 1: Rabbit control IgG instead of CSB-PA004364HA01HU in K562 whole cell lysate.

For western blotting, a HRP-conjugated Protein G antibody was used as the secondary antibody (1/2000)

Lane 2: CSB-PA004364HA01HU (8µg) + K562 whole cell lysate (500µg)

Lane 3: K562 whole cell lysate (20µg)

**Usage**

For Research Use Only. Not for use in diagnostic or therapeutic procedures.