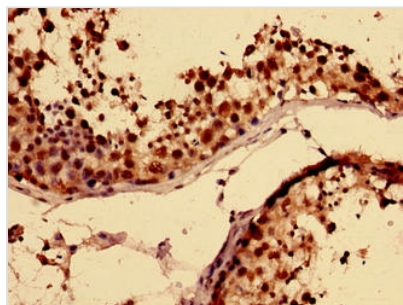




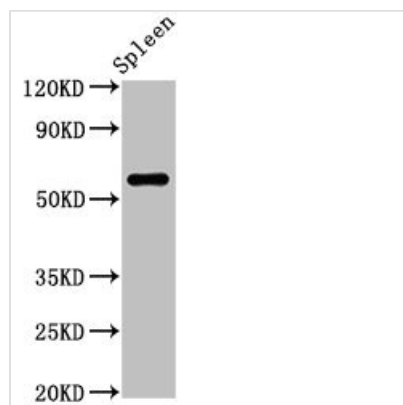
# RBMY1A1 Antibody

<b>Product Code</b>	CSB-PA319143LA01HU
<b>Storage</b>	Upon receipt, store at -20°C or -80°C. Avoid repeated freeze.
<b>Uniprot No.</b>	P0DJD3
<b>Immunogen</b>	Recombinant Human RNA-binding motif protein, Y chromosome, family 1 member A1 protein (1-459AA)
<b>Raised In</b>	Rabbit
<b>Species Reactivity</b>	Human, Rat
<b>Tested Applications</b>	ELISA, WB, IHC, IF; Recommended dilution: WB:1:500-1:5000, IHC:1:20-1:200, IF:1:50-1:200
<b>Form</b>	Liquid
<b>Conjugate</b>	Non-conjugated
<b>Storage Buffer</b>	Preservative: 0.03% Proclin 300 Constituents: 50% Glycerol, 0.01M PBS, PH 7.4
<b>Purification Method</b>	>95%, Protein G purified
<b>Isotype</b>	IgG
<b>Clonality</b>	Polyclonal
<b>Alias</b>	RNA-binding motif protein, Y chromosome, family 1 member A1 (RNA-binding motif protein 1) (RNA-binding motif protein 2) (Y chromosome RNA recognition motif 1) (hRBMY), RBMY1A1, RBM1 RBM2 YRRM1 YRRM2
<b>Immunogen Species</b>	Homo sapiens (Human)
<b>Research Area</b>	Epigenetics and Nuclear Signaling
<b>Target Names</b>	RBMY1A1

## Image



Immunohistochemistry of paraffin-embedded human testis tissue using CSB-PA319143LA01HU at dilution of 1:100



#### Western Blot

Positive WB detected in: Rat spleen tissue

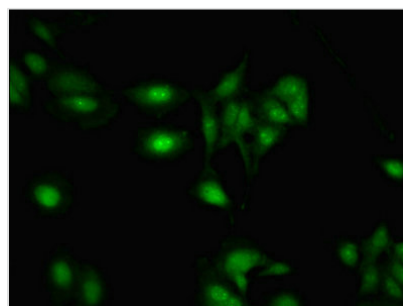
All lanes: RBMY1A1 antibody at 2.5µg/ml

Secondary

Goat polyclonal to rabbit IgG at 1/50000 dilution

Predicted band size: 56, 52, 41 kDa

Observed band size: 56 kDa



Immunofluorescent analysis of HeLa cells using

CSB-PA319143LA01HU at dilution of 1:100 and

Alexa Fluor 488-conjugated AffiniPure Goat

Anti-Rabbit IgG(H+L)