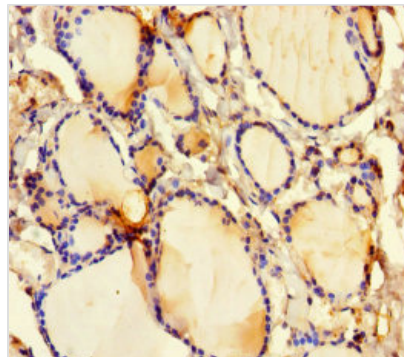




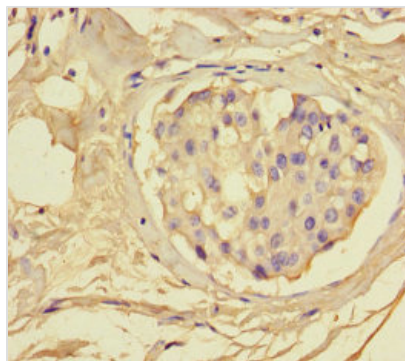
GSDME Antibody

Product Code	CSB-PA006766LA01HU
Storage	Upon receipt, store at -20°C or -80°C. Avoid repeated freeze.
Uniprot No.	O60443
Immunogen	Recombinant Human Gasdermin-E protein (1-496AA)
Raised In	Rabbit
Species Reactivity	Human
Tested Applications	ELISA, IHC, IF; Recommended dilution: IHC:1:20-1:200, IF:1:50-1:200
Form	Liquid
Conjugate	Non-conjugated
Storage Buffer	Preservative: 0.03% Proclin 300 Constituents: 50% Glycerol, 0.01M PBS, PH 7.4
Purification Method	>95%, Protein G purified
Isotype	IgG
Clonality	Polyclonal
Alias	Gasdermin-E (Inversely correlated with estrogen receptor expression 1) (ICERE-1) (Non-syndromic hearing impairment protein 5) [Cleaved into: Gasdermin-E, N-terminal (GSDME-NT); Gasdermin-E, C-terminal (GSDME-CT)], GSDME, DFNA5 ICERE1
Immunogen Species	Homo sapiens (Human)
Research Area	Neuroscience
Target Names	GSDME

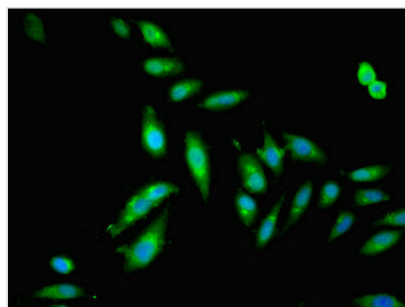
Image



Immunohistochemistry of paraffin-embedded human thyroid tissue using CSB-PA006766LA01HU at dilution of 1:100



Immunohistochemistry of paraffin-embedded human breast cancer using CSB-PA006766LA01HU at dilution of 1:100



Immunofluorescent analysis of HeLa cells using CSB-PA006766LA01HU at dilution of 1:100 and Alexa Fluor 488-conjugated AffiniPure Goat Anti-Rabbit IgG(H+L)

Usage

For Research Use Only. Not for use in diagnostic or therapeutic procedures.