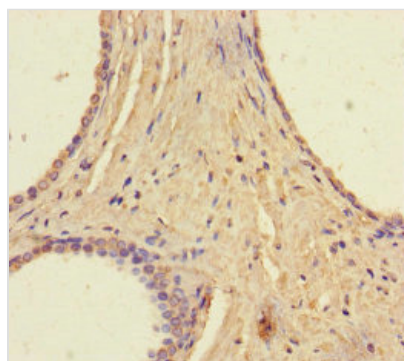




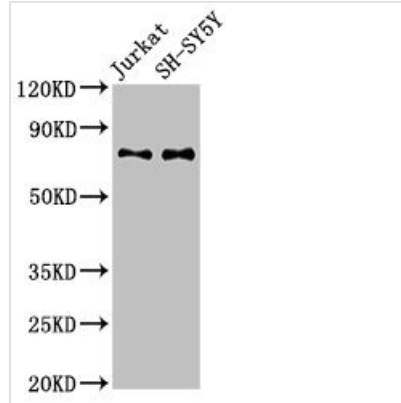
# RAVER2 Antibody

<b>Product Code</b>	CSB-PA872547LA01HU
<b>Storage</b>	Upon receipt, store at -20°C or -80°C. Avoid repeated freeze.
<b>Uniprot No.</b>	Q9HCJ3
<b>Immunogen</b>	Recombinant Human Ribonucleoprotein PTB-binding 2 protein (2-691AA)
<b>Raised In</b>	Rabbit
<b>Species Reactivity</b>	Human
<b>Tested Applications</b>	ELISA, WB, IHC, IF; Recommended dilution: WB:1:500-1:5000, IHC:1:20-1:200, IF:1:50-1:200
<b>Form</b>	Liquid
<b>Conjugate</b>	Non-conjugated
<b>Storage Buffer</b>	Preservative: 0.03% Proclin 300 Constituents: 50% Glycerol, 0.01M PBS, PH 7.4
<b>Purification Method</b>	>95%, Protein G purified
<b>Isotype</b>	IgG
<b>Clonality</b>	Polyclonal
<b>Alias</b>	Ribonucleoprotein PTB-binding 2 (Protein raver-2), RAVR2, KIAA1579
<b>Immunogen Species</b>	Homo sapiens (Human)
<b>Research Area</b>	Epigenetics and Nuclear Signaling
<b>Target Names</b>	RAVER2

## Image



Immunohistochemistry of paraffin-embedded human prostate cancer using CSB-PA872547LA01HU at dilution of 1:100

**Western Blot**

Positive WB detected in: Jurkat whole cell lysate,  
SH-SY5Y whole cell lysate

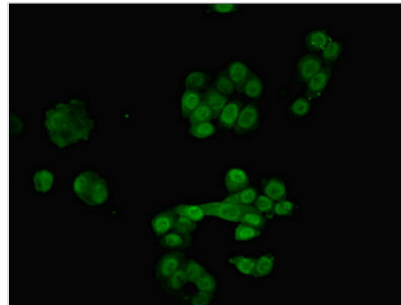
All lanes: RAVR2 antibody at 3 $\mu$ g/ml

Secondary

Goat polyclonal to rabbit IgG at 1/50000 dilution

Predicted band size: 75, 73 kDa

Observed band size: 75 kDa



Immunofluorescent analysis of PC-3 cells using  
CSB-PA872547LA01HU at dilution of 1:100 and  
Alexa Fluor 488-conjugated AffiniPure Goat  
Anti-Rabbit IgG(H+L)

**Usage**

For Research Use Only. Not for use in diagnostic or therapeutic procedures.