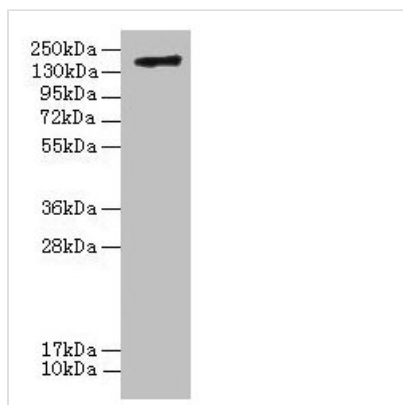




# C3 Antibody

<b>Product Code</b>	CSB-PA365507LA01MO
<b>Storage</b>	Upon receipt, store at -20°C or -80°C. Avoid repeated freeze.
<b>Uniprot No.</b>	P01027
<b>Immunogen</b>	Recombinant Mouse Complement C3 protein (1321-1663AA)
<b>Raised In</b>	Rabbit
<b>Species Reactivity</b>	Mouse, Human
<b>Tested Applications</b>	ELISA, WB; Recommended dilution: WB:1:500-1:5000
<b>Form</b>	Liquid
<b>Conjugate</b>	Non-conjugated
<b>Storage Buffer</b>	Preservative: 0.03% Proclin 300 Constituents: 50% Glycerol, 0.01M PBS, PH 7.4
<b>Purification Method</b>	>95%, Protein G purified
<b>Isotype</b>	IgG
<b>Clonality</b>	Polyclonal
<b>Alias</b>	Complement C3 (HSE-MSF) [Cleaved into: Complement C3 beta chain; C3-beta-c (C3bc); Complement C3 alpha chain; C3a anaphylatoxin; Acylation stimulating protein (ASP) (C3adesArg); Complement C3b alpha' chain; Complement C3c alpha' chain fragment 1; Complement C3dg fragment; Complement C3g fragment; Complement C3d fragment; Complement C3f fragment; Complement C3c alpha' chain fragment 2], C3
<b>Immunogen Species</b>	Mus musculus (Mouse)
<b>Research Area</b>	Immunology
<b>Target Names</b>	C3

## Image



### Western blot

All lanes: C3 antibody at 20µg/ml + Human high value serum  
Secondary  
Goat polyclonal to rabbit IgG at 1/10000 dilution  
Predicted band size: 187, 61 kDa  
Observed band size: 187 kDa

## Usage

For Research Use Only. Not for use in diagnostic or therapeutic procedures.