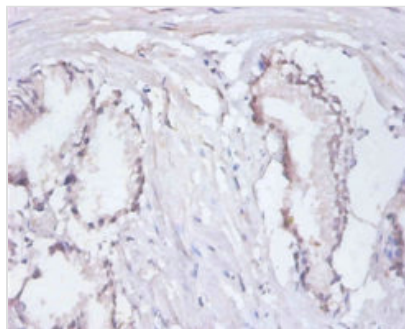




# RPA3 Antibody

|                            |                                                                                                                      |
|----------------------------|----------------------------------------------------------------------------------------------------------------------|
| <b>Product Code</b>        | CSB-PA16239A0Rb                                                                                                      |
| <b>Storage</b>             | Upon receipt, store at -20°C or -80°C. Avoid repeated freeze.                                                        |
| <b>Uniprot No.</b>         | P35244                                                                                                               |
| <b>Immunogen</b>           | Recombinant Human Replication protein A 14 kDa subunit protein (1-119AA)                                             |
| <b>Raised In</b>           | Rabbit                                                                                                               |
| <b>Species Reactivity</b>  | Human                                                                                                                |
| <b>Tested Applications</b> | ELISA, IHC; Recommended dilution: IHC:1:20-1:200                                                                     |
| <b>Form</b>                | Liquid                                                                                                               |
| <b>Conjugate</b>           | Non-conjugated                                                                                                       |
| <b>Storage Buffer</b>      | Preservative: 0.03% Proclin 300<br>Constituents: 50% Glycerol, 0.01M PBS, PH 7.4                                     |
| <b>Purification Method</b> | >95%, Protein G purified                                                                                             |
| <b>Isotype</b>             | IgG                                                                                                                  |
| <b>Clonality</b>           | Polyclonal                                                                                                           |
| <b>Alias</b>               | Replication protein A 14 kDa subunit (RP-A p14) (Replication factor A protein 3) (RF-A protein 3), RPA3, REPA3 RPA14 |
| <b>Immunogen Species</b>   | Homo sapiens (Human)                                                                                                 |
| <b>Research Area</b>       | Epigenetics and Nuclear Signaling                                                                                    |
| <b>Target Names</b>        | RPA3                                                                                                                 |

## Image



Immunohistochemistry of paraffin-embedded human prostate tissue using CSB-PA16239A0Rb at dilution of 1:100