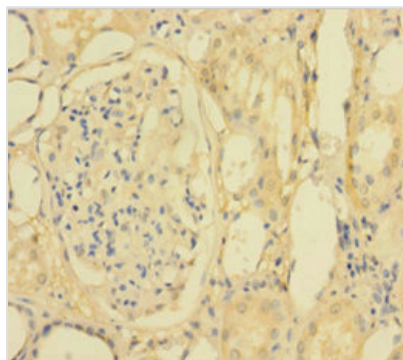




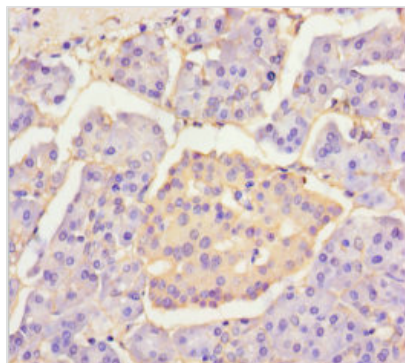
PLA2G2D Antibody

Product Code	CSB-PA891566LA01HU
Storage	Upon receipt, store at -20°C or -80°C. Avoid repeated freeze.
Uniprot No.	Q9UNK4
Immunogen	Recombinant Human Group IID secretory phospholipase A2 protein (22-145AA)
Raised In	Rabbit
Species Reactivity	Human
Tested Applications	ELISA, IHC; Recommended dilution: IHC:1:20-1:200
Form	Liquid
Conjugate	Non-conjugated
Storage Buffer	Preservative: 0.03% Proclin 300 Constituents: 50% Glycerol, 0.01M PBS, PH 7.4
Purification Method	>95%, Protein G purified
Isotype	IgG
Clonality	Polyclonal
Alias	Group IID secretory phospholipase A2 (GIID sPLA2) (sPLA2-IIID) (EC 3.1.1.4) (PLA2IID) (Phosphatidylcholine 2-acylhydrolase 2D) (Secretory-type PLA, stroma-associated homolog), PLA2G2D, SPLASH
Immunogen Species	Homo sapiens (Human)
Research Area	Cardiovascular
Target Names	PLA2G2D

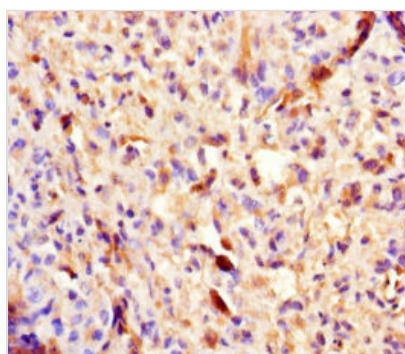
Image



Immunohistochemistry of paraffin-embedded human kidney tissue using CSB-PA891566LA01HU at dilution of 1:100



Immunohistochemistry of paraffin-embedded human pancreatic tissue using CSB-PA891566LA01HU at dilution of 1:100



Immunohistochemistry of paraffin-embedded human melanoma using CSB-PA891566LA01HU at dilution of 1:100

Usage

For Research Use Only. Not for use in diagnostic or therapeutic procedures.