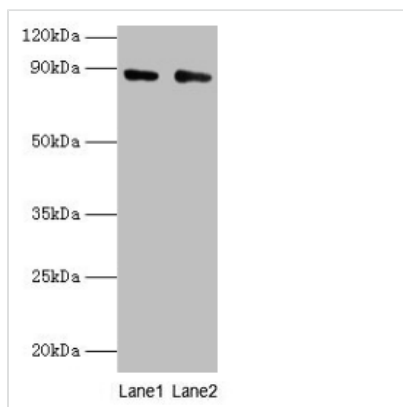




CFB Antibody

Product Code	CSB-PA11049A0Rb
Storage	Upon receipt, store at -20°C or -80°C. Avoid repeated freeze.
Uniprot No.	P00751
Immunogen	Recombinant Human Complement factor B protein (26-751AA)
Raised In	Rabbit
Species Reactivity	Human
Tested Applications	ELISA, WB, IHC; Recommended dilution: WB:1:1000-1:5000, IHC:1:20-1:200
Form	Liquid
Conjugate	Non-conjugated
Storage Buffer	Preservative: 0.03% Proclin 300 Constituents: 50% Glycerol, 0.01M PBS, PH 7.4
Purification Method	>95%, Protein G purified
Isotype	IgG
Clonality	Polyclonal
Alias	Complement factor B (EC 3.4.21.47) (C3/C5 convertase) (Glycine-rich beta glycoprotein) (GBG) (PBF2) (Properdin factor B) [Cleaved into: Complement factor B Ba fragment; Complement factor B Bb fragment], CFB, BF BFD
Immunogen Species	Homo sapiens (Human)
Research Area	Immunology
Target Names	CFB

Image



Western blot

All lanes: CFB antibody at 2µg/ml

Lane 1: K562 whole cell lysate

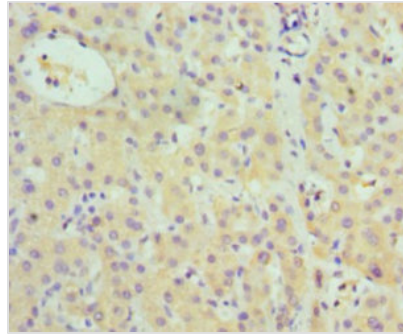
Lane 2: HepG2 whole cell lysate

Secondary

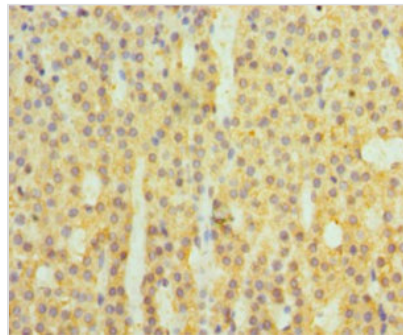
Goat polyclonal to rabbit IgG at 1/10000 dilution

Predicted band size: 86, 69 kDa

Observed band size: 86 kDa



Immunohistochemistry of paraffin-embedded human liver cancer using CSB-PA11049A0Rb at dilution of 1:100



Immunohistochemistry of paraffin-embedded human adrenal gland tissue using CSB-PA11049A0Rb at dilution of 1:100

Usage

For Research Use Only. Not for use in diagnostic or therapeutic procedures.