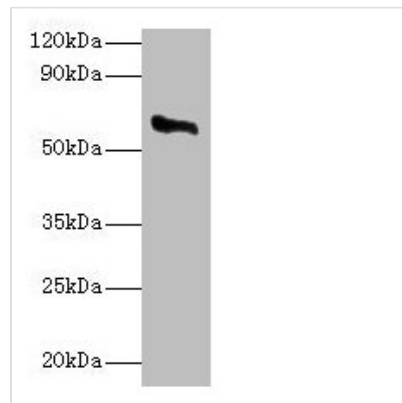




# CYP11A1 Antibody

<b>Product Code</b>	CSB-PA006389LA01HU
<b>Storage</b>	Upon receipt, store at -20°C or -80°C. Avoid repeated freeze.
<b>Uniprot No.</b>	P05108
<b>Immunogen</b>	Recombinant Human Cholesterol side-chain cleavage enzyme, mitochondrial protein (40-521AA)
<b>Raised In</b>	Rabbit
<b>Species Reactivity</b>	Human, Rat
<b>Tested Applications</b>	ELISA, WB, IHC; Recommended dilution: WB:1:1000-1:5000, IHC:1:20-1:200
<b>Form</b>	Liquid
<b>Conjugate</b>	Non-conjugated
<b>Storage Buffer</b>	Preservative: 0.03% Proclin 300 Constituents: 50% Glycerol, 0.01M PBS, PH 7.4
<b>Purification Method</b>	>95%, Protein G purified
<b>Isotype</b>	IgG
<b>Clonality</b>	Polyclonal
<b>Alias</b>	Cholesterol side-chain cleavage enzyme, mitochondrial (EC 1.14.15.6) (CYPXIA1) (Cholesterol desmolase) (Cytochrome P450 11A1) (Cytochrome P450(scc)), CYP11A1, CYP11A
<b>Immunogen Species</b>	Homo sapiens (Human)
<b>Research Area</b>	Cardiovascular
<b>Target Names</b>	CYP11A1

## Image



### Western blot

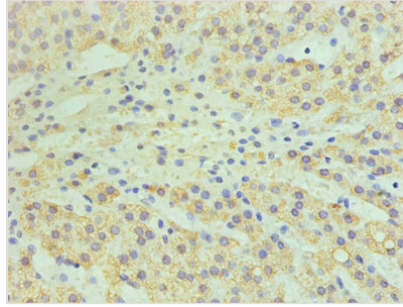
All lanes: CYP11A1 antibody at 2µg/ml + Rat adrenal gland tissue

Secondary

Goat polyclonal to rabbit IgG at 1/10000 dilution

Predicted band size: 61, 43 kDa

Observed band size: 61 kDa



Immunohistochemistry of paraffin-embedded human adrenal gland tissue using CSB-PA006389LA01HU at dilution of 1:100