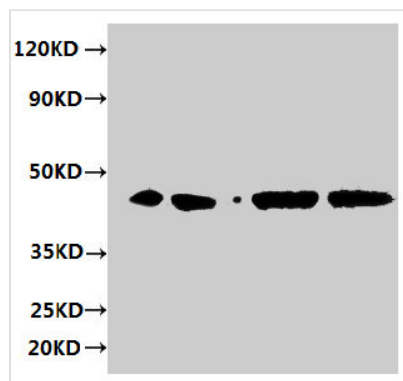




ERGIC3 Antibody

Product Code	CSB-PA896688LA01HU
Storage	Upon receipt, store at -20°C or -80°C. Avoid repeated freeze.
Uniprot No.	Q9Y282
Immunogen	Recombinant Human Endoplasmic reticulum-Golgi intermediate compartment protein 3 protein (47-341AA)
Raised In	Rabbit
Species Reactivity	Human
Tested Applications	ELISA, WB, IHC, IF; Recommended dilution: WB:1:500-1:2000, IHC:1:20-1:200, IF:1:50-1:200
Form	Liquid
Conjugate	Non-conjugated
Storage Buffer	Preservative: 0.03% Proclin 300 Constituents: 50% Glycerol, 0.01M PBS, PH 7.4
Purification Method	>95%, Protein G purified
Isotype	IgG
Clonality	Polyclonal
Alias	Endoplasmic reticulum-Golgi intermediate compartment protein 3 (Serologically defined breast cancer antigen NY-BR-84), ERGIC3, C20orf47 ERV46 SDBCAG84
Immunogen Species	Homo sapiens (Human)
Research Area	Signal Transduction
Target Names	ERGIC3

Image



Western blot

All lanes: ERGIC3 antibody at 2μg/ml

Lane 1: HepG2 whole cell lysate

Lane 2: 293T whole cell lysate

Lane 3: Hela whole cell lysate

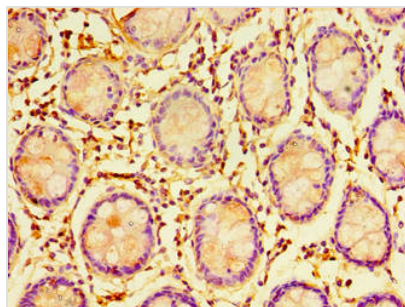
Lane 4: MCF-7 whole cell lysate

Secondary

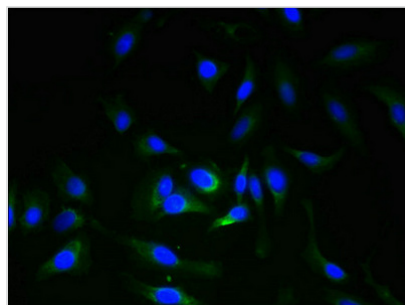
Goat polyclonal to rabbit IgG at 1/10000 dilution

Predicted band size: 44, 27 kDa

Observed band size: 44 kDa



Immunohistochemistry of paraffin-embedded human colon tissue using CSB-PA896688LA01HU at dilution of 1:100



Immunofluorescent analysis of HeLa cells using CSB-PA896688LA01HU at dilution of 1:100 and Alexa Fluor 488-conjugated AffiniPure Goat Anti-Rabbit IgG(H+L)