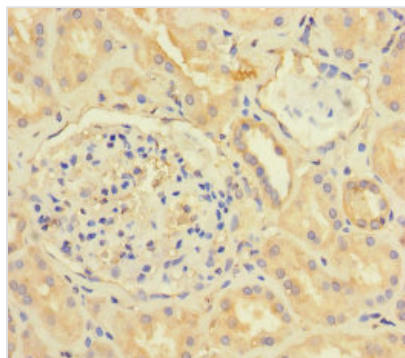




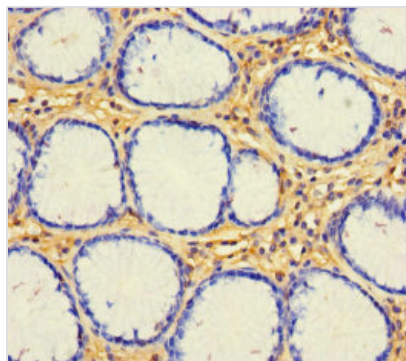
# CX3CL1 Antibody

<b>Product Code</b>	CSB-PA06087A0Rb
<b>Storage</b>	Upon receipt, store at -20°C or -80°C. Avoid repeated freeze.
<b>Uniprot No.</b>	P78423
<b>Immunogen</b>	Recombinant Human Fractalkine protein (25-100AA)
<b>Raised In</b>	Rabbit
<b>Species Reactivity</b>	Human
<b>Tested Applications</b>	ELISA, IHC, IF; Recommended dilution: IHC:1:20-1:200, IF:1:50-1:200
<b>Form</b>	Liquid
<b>Conjugate</b>	Non-conjugated
<b>Storage Buffer</b>	Preservative: 0.03% Proclin 300 Constituents: 50% Glycerol, 0.01M PBS, PH 7.4
<b>Purification Method</b>	>95%, Protein G purified
<b>Isotype</b>	IgG
<b>Clonality</b>	Polyclonal
<b>Alias</b>	Fractalkine (C-X3-C motif chemokine 1) (CX3C membrane-anchored chemokine) (Neurotactin) (Small-inducible cytokine D1) [Cleaved into: Processed fractalkine], CX3CL1, FKN NTT SCYD1
<b>Immunogen Species</b>	Homo sapiens (Human)
<b>Research Area</b>	Immunology
<b>Target Names</b>	CX3CL1

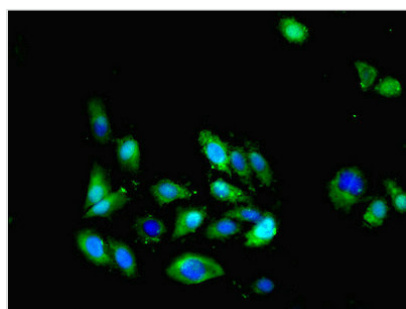
## Image



Immunohistochemistry of paraffin-embedded human kidney tissue using CSB-PA06087A0Rb at dilution of 1:100



Immunohistochemistry of paraffin-embedded human gastric cancer using CSB-PA06087A0Rb at dilution of 1:100



Immunofluorescent analysis of HeLa cells cells using CSB-PA06087A0Rb at dilution of 1:100 and Alexa Fluor 488-conjugated AffiniPure Goat Anti-Rabbit IgG(H+L)

## Usage

For Research Use Only. Not for use in diagnostic or therapeutic procedures.