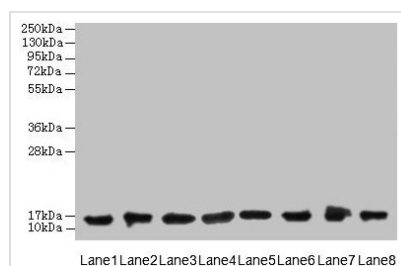




# COTL1 Antibody

<b>Product Code</b>	CSB-PA622751HA01HU
<b>Storage</b>	Upon receipt, store at -20°C or -80°C. Avoid repeated freeze.
<b>Uniprot No.</b>	Q14019
<b>Immunogen</b>	Recombinant Human Coactosin-like protein (2-142AA)
<b>Raised In</b>	Rabbit
<b>Species Reactivity</b>	Human, Mouse
<b>Tested Applications</b>	ELISA, WB, IHC; Recommended dilution: WB:1:500-1:5000, IHC:1:20-1:200
<b>Form</b>	Liquid
<b>Conjugate</b>	Non-conjugated
<b>Storage Buffer</b>	Preservative: 0.03% Proclin 300 Constituents: 50% Glycerol, 0.01M PBS, PH 7.4
<b>Purification Method</b>	>95%, Protein G purified
<b>Isotype</b>	IgG
<b>Clonality</b>	Polyclonal
<b>Alias</b>	Coactosin-like protein, COTL1, CLP
<b>Immunogen Species</b>	Homo sapiens (Human)
<b>Research Area</b>	Signal Transduction
<b>Target Names</b>	COTL1

## Image



### Western blot

All lanes: COTL1 antibody at 8µg/ml

Lane 1: Mouse brain tissue

Lane 2: HeLa whole cell lysate

Lane 3: Mouse kidney tissue

Lane 4: HepG2 whole cell lysate

Lane 5: Mouse thymus tissue

Lane 6: U87 whole cell lysate

Lane 7: HL60 whole cell lysate

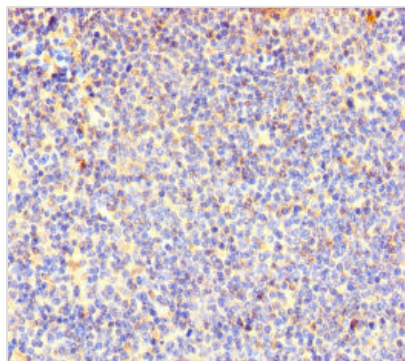
Lane 8: A549 whole cell lysate

Secondary

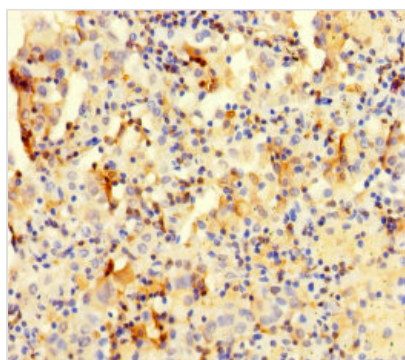
Goat polyclonal to rabbit IgG at 1/10000 dilution

Predicted band size: 16 kDa

Observed band size: 16 kDa



Immunohistochemistry of paraffin-embedded human lymphoid tissue using CSB-PA622751HA01HU at dilution of 1:100



Immunohistochemistry of paraffin-embedded human lung cancer using CSB-PA622751HA01HU at dilution of 1:100

---

**Usage**

For Research Use Only. Not for use in diagnostic or therapeutic procedures.