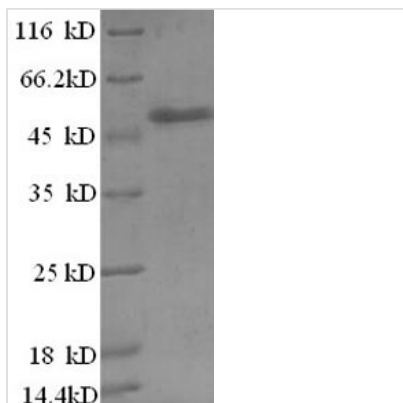




Recombinant Human Zinc finger BED domain-containing protein 1 (ZBED1), partial

Product Code	CSB-RP027154h
Relevance	Binds to 5'-TGTCG[CT]GA[CT]A-3' DNA elements found in the promoter regions of a number of genes related to cell proliferation. Binds to the histone H1 promoter and stimulates transcription. Was first identified as gene weakly similar to Ac transposable elements, but does not code for any transposase activity.
Abbreviation	Recombinant Human ZBED1 protein, partial
Storage	The shelf life is related to many factors, storage state, buffer ingredients, storage temperature and the stability of the protein itself. Generally, the shelf life of liquid form is 6 months at -20°C/-80°C. The shelf life of lyophilized form is 12 months at -20°C/-80°C.
Uniprot No.	O96006
Alias	Putative Ac-like transposable elementdREF homolog
Product Type	Recombinant Protein
Immunogen Species	Homo sapiens (Human)
Purity	≥ 90% as determined by SDS-PAGE.
Sequence	MENKSLESSQTDLKLVHAHPRAKSKVWKYFGFDTNAEGCILQWKKIYCRICMAQ IAYSGNTSNLSYHLEKNHPPEEFCEFVKSNTQMQREAFATAFSKLPRESSQQPG QDALAVKAGHGYDSKKQQLTA AVLGLICEGLYPASIVDEPTFKVLLKTADPRY ELPSRKYISTKAIPEKYGAVREVILKELAEATWCGISTDMWRSENQNRAY
Research Area	Epigenetics and Nuclear Signaling
Source	E.coli
Target Names	ZBED1
Expression Region	1-210aa
Notes	Repeated freezing and thawing is not recommended. Store working aliquots at 4°C for up to one week.
Tag Info	N-terminal GST-tagged
Mol. Weight	50.8kDa
Protein Length	Partial
Image	



(Tris-Glycine gel) Discontinuous SDS-PAGE (reduced) with 5% enrichment gel and 15% separation gel.

Reconstitution

We recommend that this vial be briefly centrifuged prior to opening to bring the contents to the bottom. Please reconstitute protein in deionized sterile water to a concentration of 0.1-1.0 mg/mL. We recommend to add 5-50% of glycerol (final concentration) and aliquot for long-term storage at -20°C/-80°C. Our default final concentration of glycerol is 50%. Customers could use it as reference.

Shelf Life

The shelf life is related to many factors, storage state, buffer ingredients, storage temperature and the stability of the protein itself. Generally, the shelf life of liquid form is 6 months at -20°C/-80°C. The shelf life of lyophilized form is 12 months at -20°C/-80°C.