



# Recombinant Escherichia coli Chaperone surA (surA)

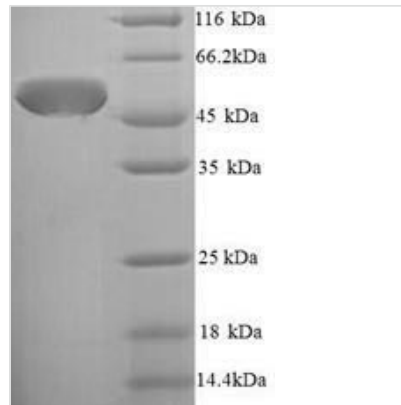
<b>Product Code</b>	CSB-YP359693ENV
<b>Relevance</b>	Chaperone involved in the correct folding and assembly of outer membrane proteins, such as OmpA, OmpF and LamB. Recognizes specific patterns of aromatic residues and the orientation of their side chains, which are found more frequently in integral outer membrane proteins. May act in both early periplasmic and late outer membrane-associated steps of protein maturation. Essential for the survival of E.coli in stationary phase. Required for pilus biogenesis.
<b>Abbreviation</b>	Recombinant E.coli surA protein
<b>Storage</b>	The shelf life is related to many factors, storage state, buffer ingredients, storage temperature and the stability of the protein itself. Generally, the shelf life of liquid form is 6 months at -20°C/-80°C. The shelf life of lyophilized form is 12 months at -20°C/-80°C.
<b>Uniprot No.</b>	P0ABZ6
<b>Alias</b>	Peptidyl-prolyl cis-trans isomerase SurA (EC:5.2.1.8) ;PPIase SurARotamase SurASurvival protein A
<b>Product Type</b>	Recombinant Protein
<b>Immunogen Species</b>	Escherichia coli (strain K12)
<b>Purity</b>	≥ 90% as determined by SDS-PAGE.
<b>Sequence</b>	APQVVDKVAAVVNNGVVLESVDGLMQSVKLNAAQARQQLPDDATLRHQIME RLIMDQIILQMGQKMGVKISDEQLDQAIANIAKQNNMTLDQMRSRLAYDGLNY NTYRNQIRKEMIISEVRNNEVRRRITILPQEVESLAQQVGNQNDASTELNLSHILI PLPENPTSDQVNEAESQARAIVDQARNGADFGKLAIAHSADQQALNGGQMG WGRIQELPGIFAQALSTAKKGDIVGPIRSGVGFHILKVNDLRGESKNISVTEVHA RHILLKPSPIMTDEQARVKLEQIAADIKSGKTTFAAAAKEFSQDPGSANQGGDL GWATPDIFDPAFRDALTRLNKGQMSAPVHSSFGWHLIELLDTRNVDKTDAAQ KDRAYRMLMNRKFSEEAASWMQEQRASAYVKILSN
<b>Research Area</b>	Others
<b>Source</b>	Yeast
<b>Target Names</b>	surA
<b>Protein Names</b>	Recommended name: Chaperone surA Alternative name(s): Peptidyl-prolyl cis-trans isomerase surA Short name= PPIase surA EC= 5.2.1.8 Rotamase surA Survival protein A
<b>Expression Region</b>	21-428aa
<b>Notes</b>	Repeated freezing and thawing is not recommended. Store working aliquots at 4°C for up to one week.
<b>Tag Info</b>	N-terminal 6xHis-tagged



---

<b>Mol. Weight</b>	47.1kDa
<b>Protein Length</b>	Full Length of Mature Protein

---

**Image**

(Tris-Glycine gel) Discontinuous SDS-PAGE (reduced) with 5% enrichment gel and 15% separation gel.

---

<b>Reconstitution</b>	We recommend that this vial be briefly centrifuged prior to opening to bring the contents to the bottom. Please reconstitute protein in deionized sterile water to a concentration of 0.1-1.0 mg/mL. We recommend to add 5-50% of glycerol (final concentration) and aliquot for long-term storage at -20°C/-80°C. Our default final concentration of glycerol is 50%. Customers could use it as reference.
-----------------------	---

---

<b>Shelf Life</b>	The shelf life is related to many factors, storage state, buffer ingredients, storage temperature and the stability of the protein itself. Generally, the shelf life of liquid form is 6 months at -20°C/-80°C. The shelf life of lyophilized form is 12 months at -20°C/-80°C.
-------------------	---