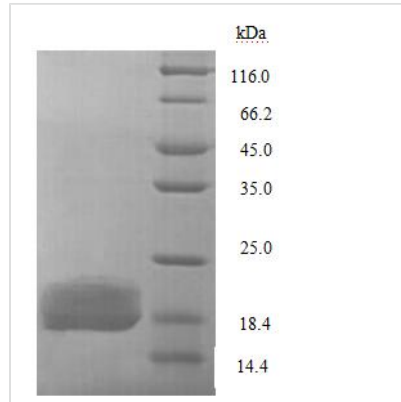




Recombinant Escherichia coli Lipopolysaccharide export system protein LptA (lptA)

Product Code	CSB-YP360010ENV
Relevance	Involved in the assembly of lipopolysaccharide (LPS). Required for the translocation of LPS from the inner membrane to the outer membrane. May form a bridge between the inner membrane and the outer membrane, via interactions with LptC and LptD, thereby facilitating LPS transfer across the periplasm.
Abbreviation	Recombinant E.coli lptA protein
Storage	The shelf life is related to many factors, storage state, buffer ingredients, storage temperature and the stability of the protein itself. Generally, the shelf life of liquid form is 6 months at -20°C/-80°C. The shelf life of lyophilized form is 12 months at -20°C/-80°C.
Uniprot No.	P0ADV1
Product Type	Recombinant Protein
Immunogen Species	Escherichia coli (strain K12)
Purity	Greater than 90% as determined by SDS-PAGE.
Sequence	VTGDTDQPIHIESDQQSLDMQGNVVTFTGNVIVTQGTIKINADKVVVTRPGGEQ GKEVIDGYGKPFYQMQDNGKPVVEGHASQMHYELAKDFVVLVTGNAYLQQV DSNIKGDKITYLVKEQKMQAFSDKGRVTTVLVPSQLQDKNNKGGQTPAQKKG N
Research Area	Others
Source	Yeast
Target Names	lptA
Protein Names	Recommended name: Lipopolysaccharide export system protein lptA
Expression Region	28-185aa
Notes	Repeated freezing and thawing is not recommended. Store working aliquots at 4°C for up to one week.
Tag Info	N-terminal 6xHis-tagged
Mol. Weight	19.3kDa
Protein Length	Full Length of Mature Protein
Image	



(Tris-Glycine gel) Discontinuous SDS-PAGE (reduced) with 5% enrichment gel and 15% separation gel.

Reconstitution

We recommend that this vial be briefly centrifuged prior to opening to bring the contents to the bottom. Please reconstitute protein in deionized sterile water to a concentration of 0.1-1.0 mg/mL. We recommend to add 5-50% of glycerol (final concentration) and aliquot for long-term storage at -20°C/-80°C. Our default final concentration of glycerol is 50%. Customers could use it as reference.

Shelf Life

The shelf life is related to many factors, storage state, buffer ingredients, storage temperature and the stability of the protein itself. Generally, the shelf life of liquid form is 6 months at -20°C/-80°C. The shelf life of lyophilized form is 12 months at -20°C/-80°C.