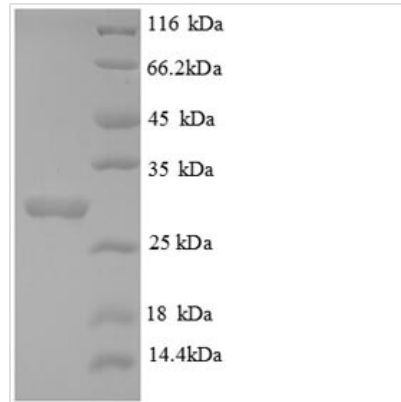




Recombinant Human Collagen alpha-3 (IV) chain (COL4A3), partial

| | |
|--------------------------|--|
| Product Code | CSB-EP005743HU |
| Relevance | Type IV collagen is the major structural component of glomerular basement membranes (GBM), forming a 'chicken-wire' meshwork together with laminins, proteoglycans and entactin/nidogen. Tumstatin, a cleavage fragment corresponding to the collagen alpha 3(IV) NC1 domain, possesses both anti-angiogenic and anti-tumor cell activity; these two anti-tumor properties may be regulated via RGD-independent ITGB3-mediated mechanisms. |
| Abbreviation | Recombinant Human COL4A3 protein, partial |
| Storage | The shelf life is related to many factors, storage state, buffer ingredients, storage temperature and the stability of the protein itself. Generally, the shelf life of liquid form is 6 months at -20°C/-80°C. The shelf life of lyophilized form is 12 months at -20°C/-80°C. |
| Uniprot No. | Q01955 |
| Alias | Goodpasture antigen |
| Product Type | Recombinant Protein |
| Immunogen Species | Homo sapiens (Human) |
| Purity | ≥ 90% as determined by SDS-PAGE. |
| Sequence | GLKGKRGDSGSPATWTRGFVTRHSQTTAIPSCPEGTVPLYSGFSFLFVQG NQRAHGQDLGLGSLQRFTTMPFLFCNVNDVCNFASRNDYSYWLSTPALM PMNMAPITGRALEPYISRCTVCEGPAIAIAVHSQTTDIPPCPHGWISLWKGFSFI MFTSAGSEGTGQALASPGSCLEEFRAFPFLECHGRGTCNYYSNSYSFWLASL NPERMFRKPIPSTVKAGELEKIISRCQVCMKK |
| Research Area | Cell Adhesion |
| Source | E.coli |
| Target Names | COL4A3 |
| Expression Region | 1427-1668aa |
| Notes | Repeated freezing and thawing is not recommended. Store working aliquots at 4°C for up to one week. |
| Tag Info | N-terminal 6xHis-tagged |
| Mol. Weight | 30.6 kDa |
| Protein Length | Partial |
| Image | |



(Tris-Glycine gel) Discontinuous SDS-PAGE (reduced) with 5% enrichment gel and 15% separation gel.

Reconstitution

We recommend that this vial be briefly centrifuged prior to opening to bring the contents to the bottom. Please reconstitute protein in deionized sterile water to a concentration of 0.1-1.0 mg/mL. We recommend to add 5-50% of glycerol (final concentration) and aliquot for long-term storage at -20°C/-80°C. Our default final concentration of glycerol is 50%. Customers could use it as reference.

Shelf Life

The shelf life is related to many factors, storage state, buffer ingredients, storage temperature and the stability of the protein itself. Generally, the shelf life of liquid form is 6 months at -20°C/-80°C. The shelf life of lyophilized form is 12 months at -20°C/-80°C.