



Recombinant Human Ryanodine receptor 1 (RYR1), partial

Product Code	CSB-EP020619HU
Relevance	Calcium channel that mediates the release of Ca ²⁺ from the sarcoplasmic reticulum into the cytoplasm and thereby plays a key role in triggering muscle contraction following depolarization of T-tubules. Repeated very high-level exercise increases the open probability of the channel and leads to Ca ²⁺ leaking into the cytoplasm. Can also mediate the release of Ca ²⁺ from intracellular stores in neurons, and may thereby promote prolonged Ca ²⁺ signaling in the brain. Required for normal bryonic development of muscle fibers and skeletal muscle. Required for normal heart morphogenesis, skin development and ossification during bryogenesis .
Storage	The shelf life is related to many factors, storage state, buffer ingredients, storage temperature and the stability of the protein itself. Generally, the shelf life of liquid form is 6 months at -20°C/-80°C. The shelf life of lyophilized form is 12 months at -20°C/-80°C.
Uniprot No.	P21817
Alias	Skeletal muscle calcium release channelSkeletal muscle ryanodine receptorSkeletal muscle-type ryanodine receptorType 1 ryanodine receptor
Product Type	Recombinant Protein
Immunogen Species	Homo sapiens (Human)
Purity	Greater than 90% as determined by SDS-PAGE.
Sequence	MGDAEGEDEVQFLRTDDEVVLQCSATVLKEQLKLCLAAEGFGNRLCFLEPTS NAQNVPPDLAICCFVLEQSLSVRALQEMLANTVEAGVLESSQGGGHRTLLYGH AILLRHAHSRMYLSCLTTSRSMTDKLAFDVGLQEDATGEACWWTMHPASKQR SEGEKVRVGDDIILVSVSSERYLHLSTASGELQVDASFMQTLWNMNPICSRCE EGFVTGGHVLRLFHGHMDECLTISPADSDDQRRLLVYYEGGAVCTHARSLWRL EPLRISWGSGLRWGQPLRVRHVTTGQYLALTEDQGLVVVDASKAHTKATSF CFRISKEKLDVAPKRDVEGMGPPEIKYGESLCFVQHVASGLWLTYAAPDPKAL RLGVLKKKAMLHQEGHMDDALSLTRCQQEESQAARMIHSTNGLYNQFIKSLD SFSGKPRGSGPPAGTALPIEGVILSLQDLIIYFPPSEDLQHEEKQSKLRSRNR QSLFQEEGMLSMVLCIDRLNVYTAAHFAEFAGEEAAESWKEIVNLLYELLAS LIRGNRS
Research Area	Transport
Source	E.coli
Target Names	RYR1
Expression Region	1-534aa
Notes	Repeated freezing and thawing is not recommended. Store working aliquots at 4°C for up to one week.

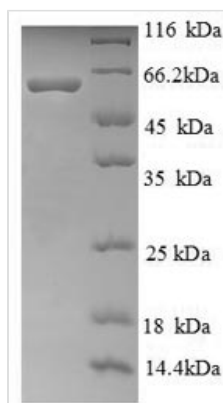


Tag Info N-terminal 6xHis-tagged

Mol. Weight 63.3kDa

Protein Length Partial

Image



(Tris-Glycine gel) Discontinuous SDS-PAGE (reduced) with 5% enrichment gel and 15% separation gel.

Reconstitution

We recommend that this vial be briefly centrifuged prior to opening to bring the contents to the bottom. Please reconstitute protein in deionized sterile water to a concentration of 0.1-1.0 mg/mL. We recommend to add 5-50% of glycerol (final concentration) and aliquot for long-term storage at -20°C/-80°C. Our default final concentration of glycerol is 50%. Customers could use it as reference.

Shelf Life

The shelf life is related to many factors, storage state, buffer ingredients, storage temperature and the stability of the protein itself. Generally, the shelf life of liquid form is 6 months at -20°C/-80°C. The shelf life of lyophilized form is 12 months at -20°C/-80°C.