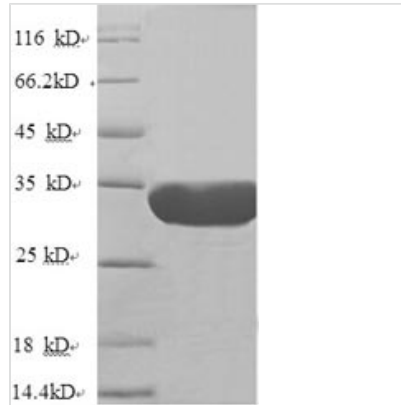




Recombinant Human Nuclear pore membrane glycoprotein 210 (NUP210), partial

Product Code	CSB-EP016195HU(C)
Relevance	Nucleoporin essential for nuclear pore assembly and fusion, nuclear pore spacing, as well as structural integrity.
Abbreviation	Recombinant Human NUP210 protein, partial
Storage	The shelf life is related to many factors, storage state, buffer ingredients, storage temperature and the stability of the protein itself. Generally, the shelf life of liquid form is 6 months at -20°C/-80°C. The shelf life of lyophilized form is 12 months at -20°C/-80°C.
Uniprot No.	Q8TEM1
Alias	Nuclear envelope pore membrane protein POM 210 ;POM210Nucleoporin Nup210Pore membrane protein of 210 kDa
Product Type	Recombinant Protein
Immunogen Species	Homo sapiens (Human)
Purity	Greater than 90% as determined by SDS-PAGE.
Sequence	AVGSVTVYYEVAGHLRTYKEVVVSVQQRIMARHLHPIQTSFQEATASKVIVAVG DRSSNLRGECTPTQREVIQALHPETLISCQSQFKPAVDFDFPSQDVFTVEPQFD TALGQYFCSITMHLRDTKQRKHLISMKKTALVVSASLSSSHFSTEQVGA EVPFS PGLFADQAEILLSNHYSSEIRVFGAPEVLENLEVKSGSPAVLAFAKEKSFSGWP SFITYTVGVLDPAAGSQGPLSTTLTFSSPVTNQAIAIPVTVAFVVDRRGPGPYG ASLFQHFLDSYQ
Research Area	Transport
Source	E.coli
Target Names	NUP210
Expression Region	1529-1808aa
Notes	Repeated freezing and thawing is not recommended. Store working aliquots at 4°C for up to one week.
Tag Info	N-terminal 6xHis-tagged
Mol. Weight	34.5kDa
Protein Length	Partial
Image	



(Tris-Glycine gel) Discontinuous SDS-PAGE (reduced) with 5% enrichment gel and 15% separation gel.

Reconstitution

We recommend that this vial be briefly centrifuged prior to opening to bring the contents to the bottom. Please reconstitute protein in deionized sterile water to a concentration of 0.1-1.0 mg/mL. We recommend to add 5-50% of glycerol (final concentration) and aliquot for long-term storage at -20°C/-80°C. Our default final concentration of glycerol is 50%. Customers could use it as reference.

Shelf Life

The shelf life is related to many factors, storage state, buffer ingredients, storage temperature and the stability of the protein itself. Generally, the shelf life of liquid form is 6 months at -20°C/-80°C. The shelf life of lyophilized form is 12 months at -20°C/-80°C.